

疊加式減壓閥



■ 特性

- MBR系列積層型減壓閥可使用 P孔、A孔、B孔 減少壓力。
- 閥本體鑄鐵強度夠且耐久性，壽命長。
- 內部硬鋼原件提高產品壽命。
- 三種標準壓力設定選擇。
- 六角螺絲或把手兩種壓力調整選擇。

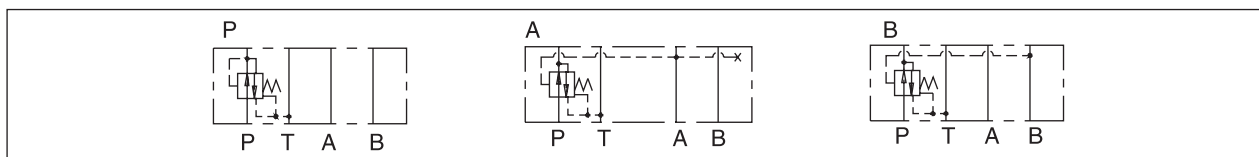
■ 型號說明

MBR	-02	-P	1	-K	-L	-2H	-20
系列號碼	稱呼口徑	動作形式	壓力範圍 bar	調節形式	手柄方向	調整部長度	設計編號
MBR系列 疊加式減壓閥	02:1/4"(6mm) 03:3/8"(9mm) 04:1/2"(12mm) 06:3/4"(19mm)	請參照動作 形式圖	對於02口徑: 1、3~35 2、3~70 3、5~210 對於03,04,06口徑: 1、8~70 2、10~140 3、10~250	無: 工具調整 K: 手柄調整	無: B方向(標準型) L: A方向	無: 標準長度 2H: 需訂制 3H: 需訂制 4H: 需訂制	20

■ 規格表

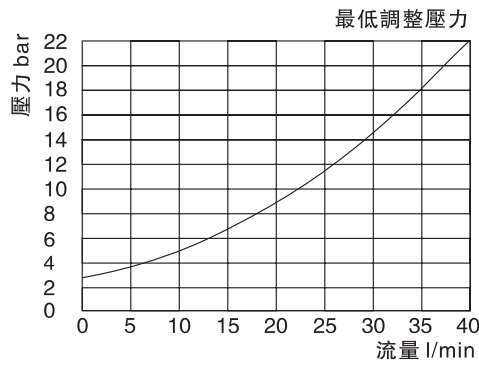
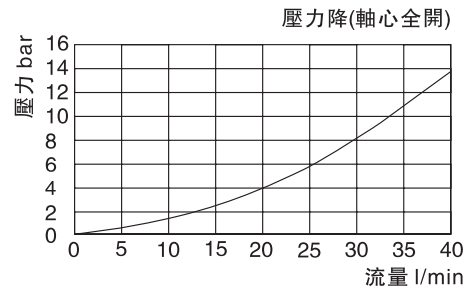
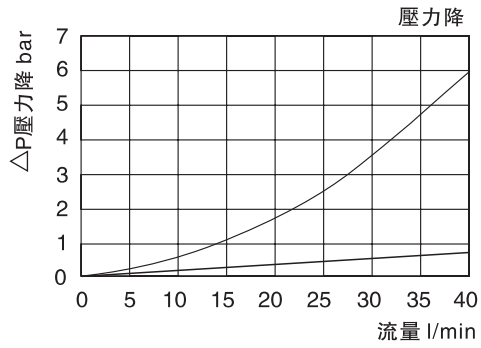
型號	最大壓力 bar	適用管徑	最大流量 l/min	重量 kg
MBR-02-P	315	1/4"	40	1.2
MBR-03-P		3/8"	80	3.3
MBR-04-P	350	1/2"	300	7.5
MBR-06-P	315	3/4"	190	11.6
MBR-02-A		1/4"	40	1.2
MBR-03-A		3/8"	80	3.3
MBR-04-A		1/2"	300	7.5
MBR-06-A	315	3/4"	190	11.6
MBR-02-B		1/4"	40	1.2
MBR-03-B		3/8"	80	3.3
MBR-04-B		1/2"	300	7.5
MBR-06-B	315	3/4"	190	11.6
流體型式	推薦使用: ISO VG32、46、68			
推薦粘度	油度40°C時為10cst-400cst			
環境溫度	-15°C-70°C			
油液污染度	符合ISO 19/16 建議用25µm、β25≥75的進油濾油器			

■ 動作形式

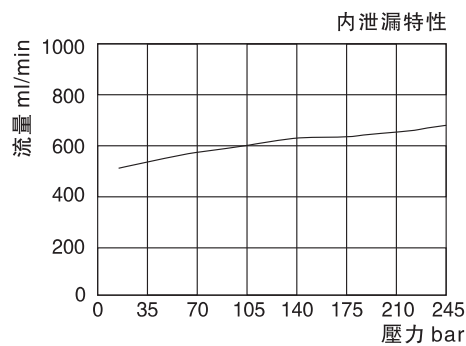
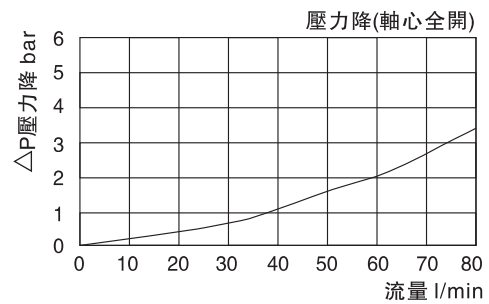
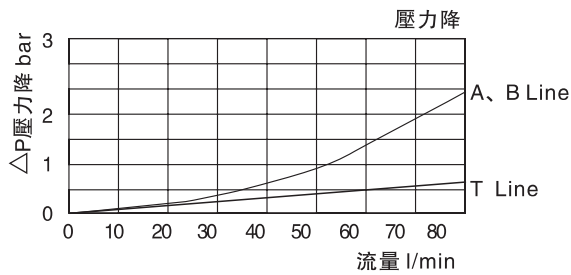


■ 曲綫圖 測試條件：油温：T=50°C，粘度：35cst

MBR-02



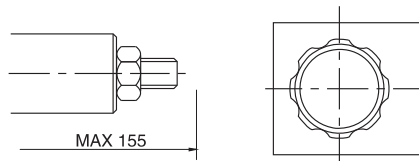
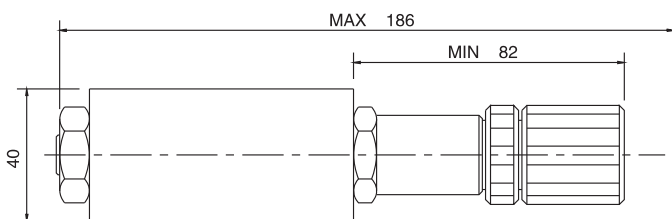
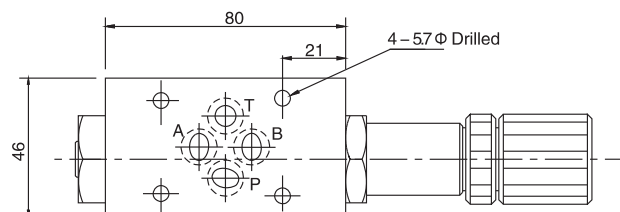
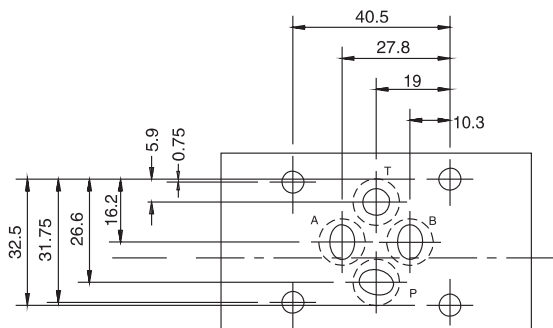
MBR-03



■ 尺寸圖

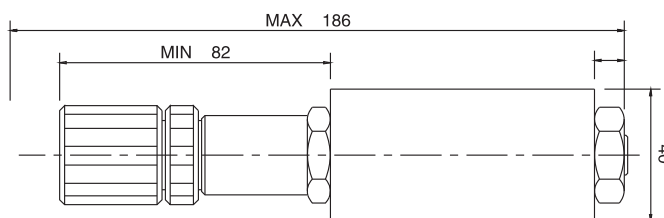
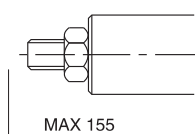
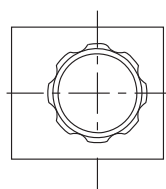
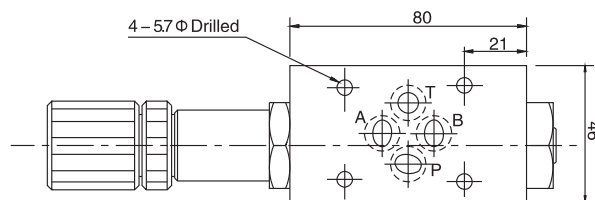
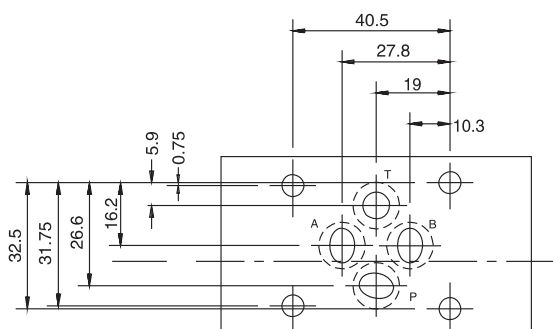
MBR-02--20**

■ 安裝尺寸符合：ISO 4401 標準



MBR-02--L-20**

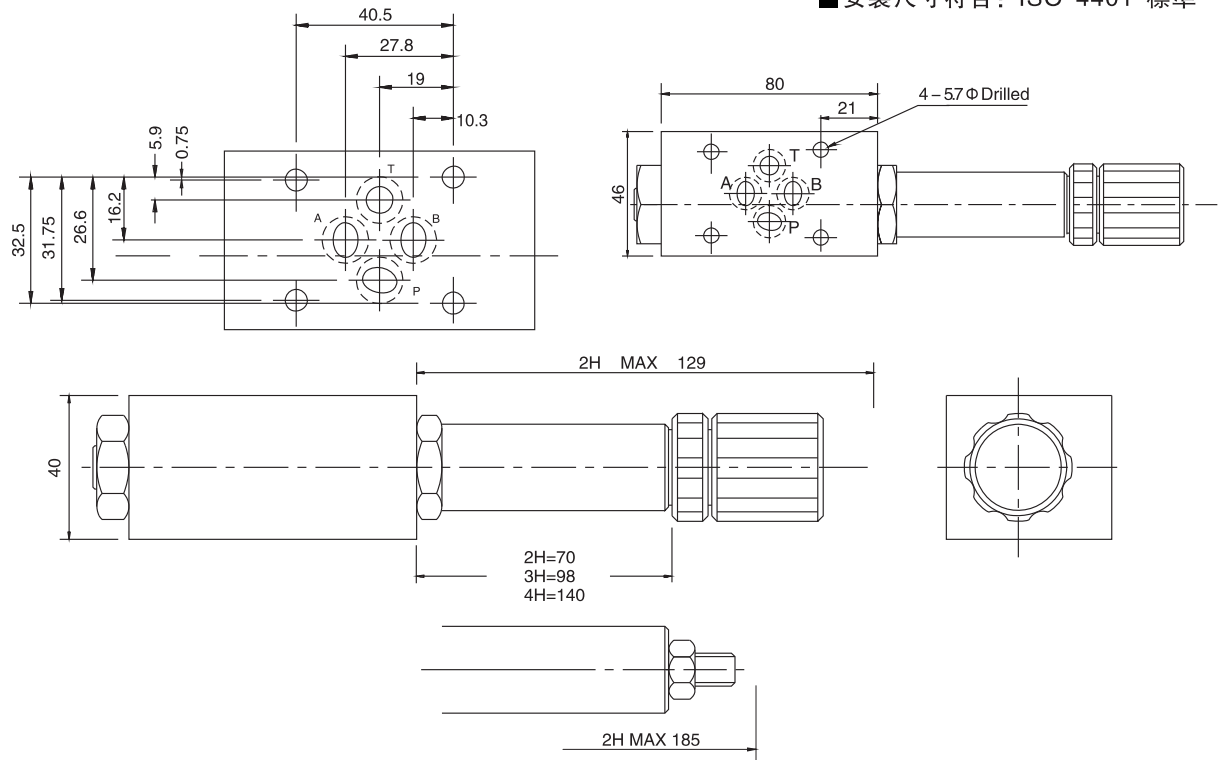
■ 安裝尺寸符合：ISO 4401 標準



■ 尺寸圖

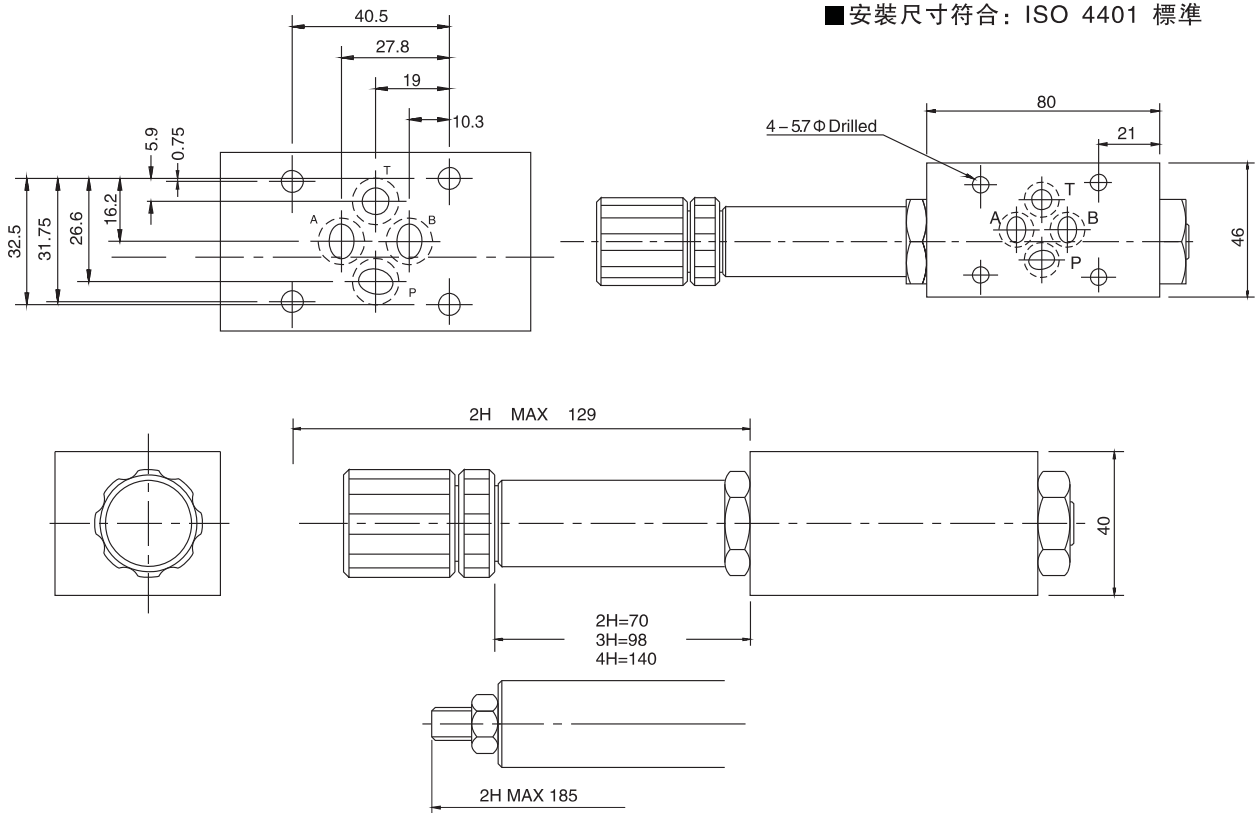
MBR-02--**-**H-20**

■ 安裝尺寸符合：ISO 4401 標準



MBR-02--L-**-**H-20**

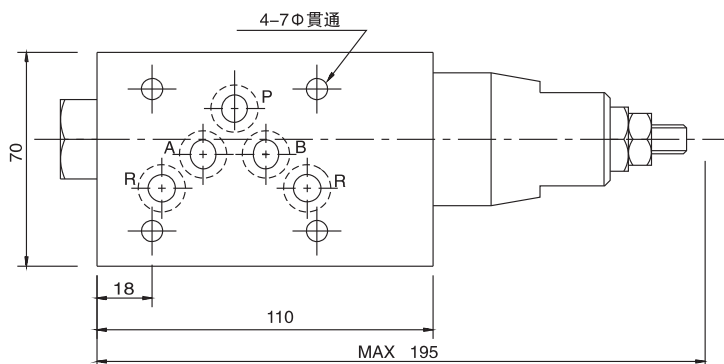
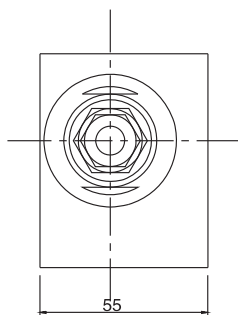
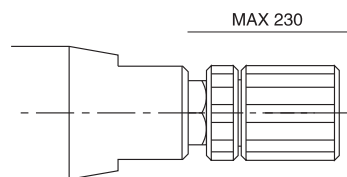
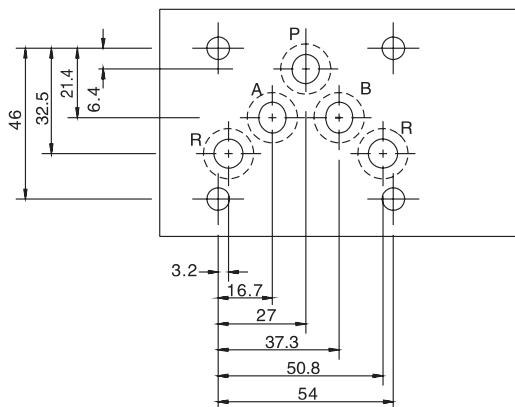
■ 安裝尺寸符合：ISO 4401 標準



■ 尺寸圖

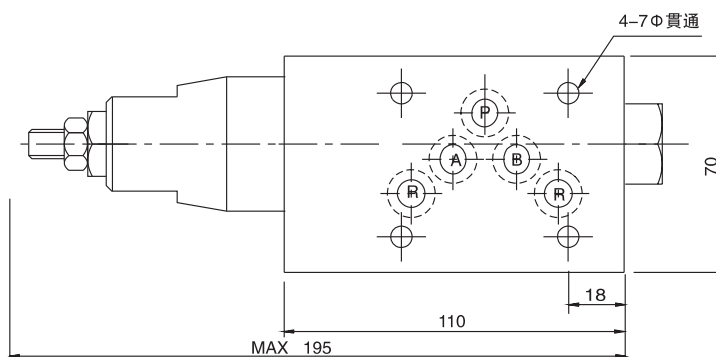
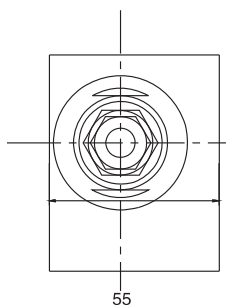
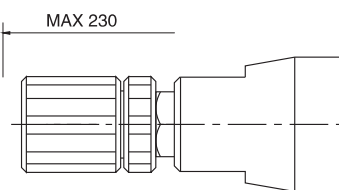
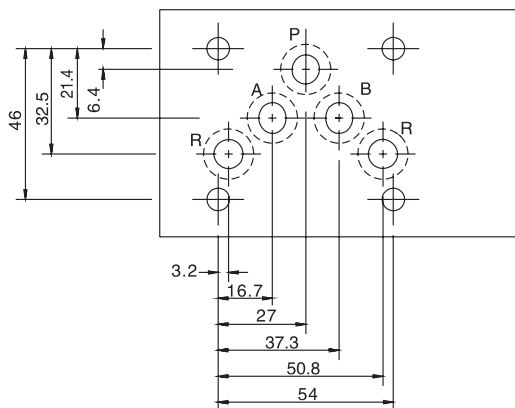
MBR-03--20**

■ 安裝尺寸符合：ISO 4401 標準



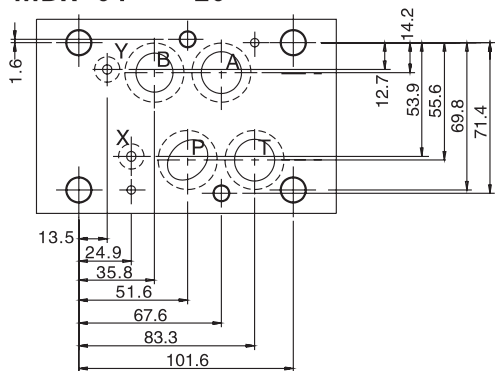
MBR-03--L-20**

■ 安裝尺寸符合：ISO 4401 標準

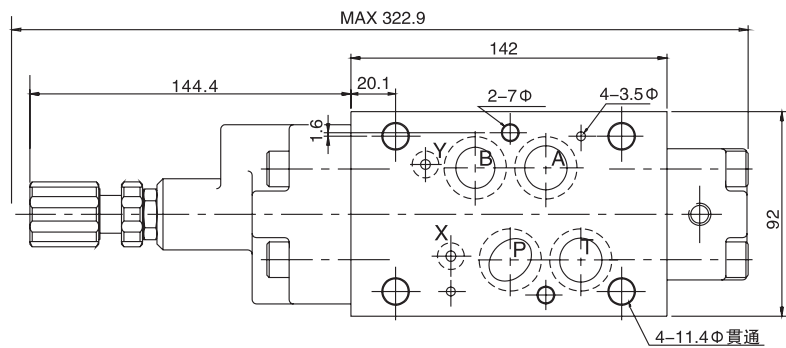
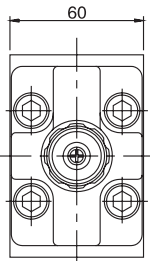
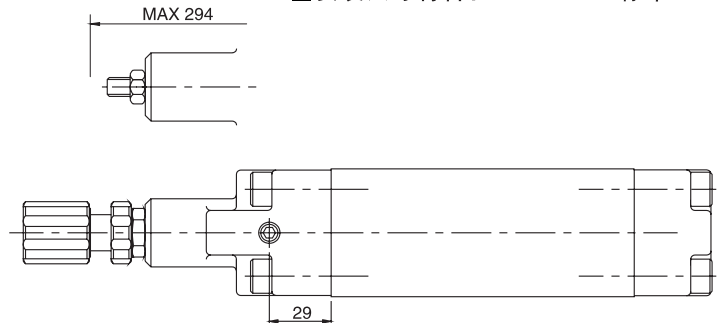


■ 尺寸圖

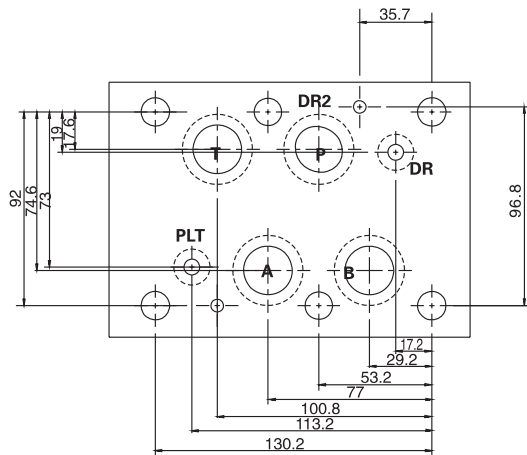
MBR-04-**-20



■ 安裝尺寸符合：ISO 4401 標準



MBR-06-**-20



■ 安裝尺寸符合：ISO 4401 標準

