

疊加式溢流閥



■ 特性

- MRV系列積層型調壓閥可使用 P孔、A孔、B孔 或 A-B孔至油箱和A-B孔交叉有效的限制壓力。
- 閥本體鑄鐵強度夠且耐久性，壽命長。
- 內部硬鋼原件提高產品壽命。
- 四種標準壓力設定選擇。
- 六角螺絲或把手兩種壓力調整選擇。

■ 型號說明

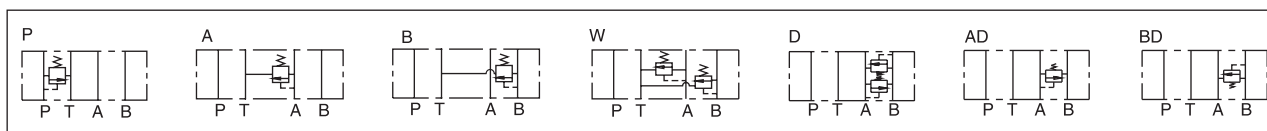
MRV	-01	-P	1	-K	-L	-20
系列號碼	稱呼口徑	動作形式	壓力範圍 bar	調節形式	手柄方向	設計編號
MRV系列 疊加式溢流閥	01:1/8"(3mm) 02:1/4"(6mm) 03:3/8"(9mm) 04:1/2"(12mm) 06:3/4"(19mm)	請參照動作 形式圖	P.A.B.W 1、*~70 2、8~140 3、10~250 4、20~315 D.AD.BD 1、*~70 2、10~210	無：工具調整 K：手柄調整	無：B方向（標準型） L：A方向	20

注：D、AD、BD型祇有02、03規格。

■ 規格表

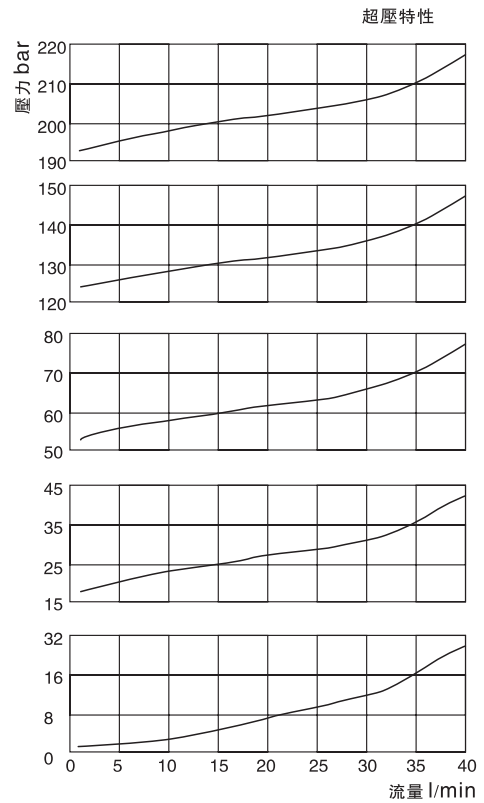
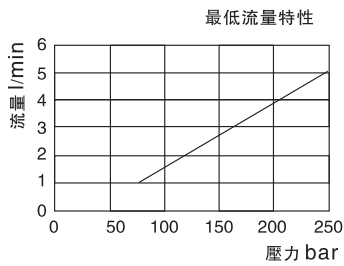
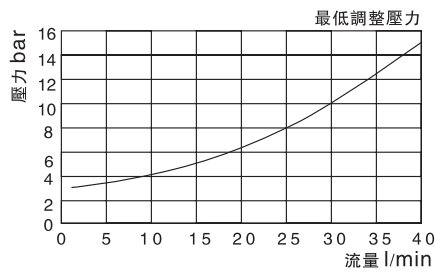
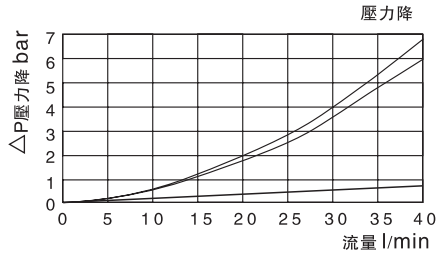
型號	最大壓力 bar	適用管徑	最大流量 l/min	重量 kg	
MRV-01-P,A,B	315	1/8"	2	1.3	
MRV-02-P,A,B		1/4"	40	1.5	
MRV-03-P,A,B		3/8"	80	3.3	
MRV-06-P,A,B		3/4"	200	12.2	
MRV-01-W		1/8"	2	1.5	
MRV-02-W		1/4"	40	2.0	
MRV-03-W		3/8"	80	3.9	
MRV-02-D		1/4"	20	2.0	
MRV-03-D		3/8"	30	4.8	
MRV-02-AD		1/4"	20	1.8	
MRV-03-AD		3/8"	30	4.0	
MRV-02-BD		1/4"	20	1.8	
MRV-03-BD		3/8"	30	4.0	
MRV-04-P			1/2"	200	6.0
流體型式		推薦使用：ISO VG32、46、68			
推薦粘度		油度40°C時為10cst-400cst			
環境溫度	-15°C-70°C				
油液污染度	符合ISO 19/16 建議用25µm、β25≥75的進油濾油器				

■ 動作形式

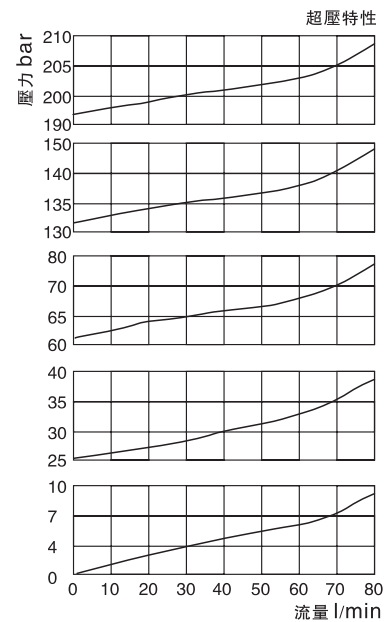
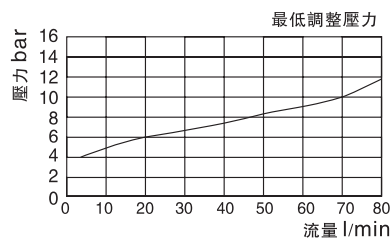
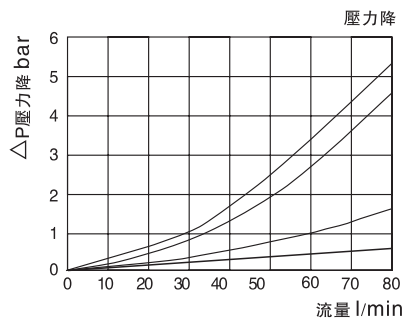


■ 性能曲綫 測試條件：油温：T=50°C，粘度：35cst

MRV-02

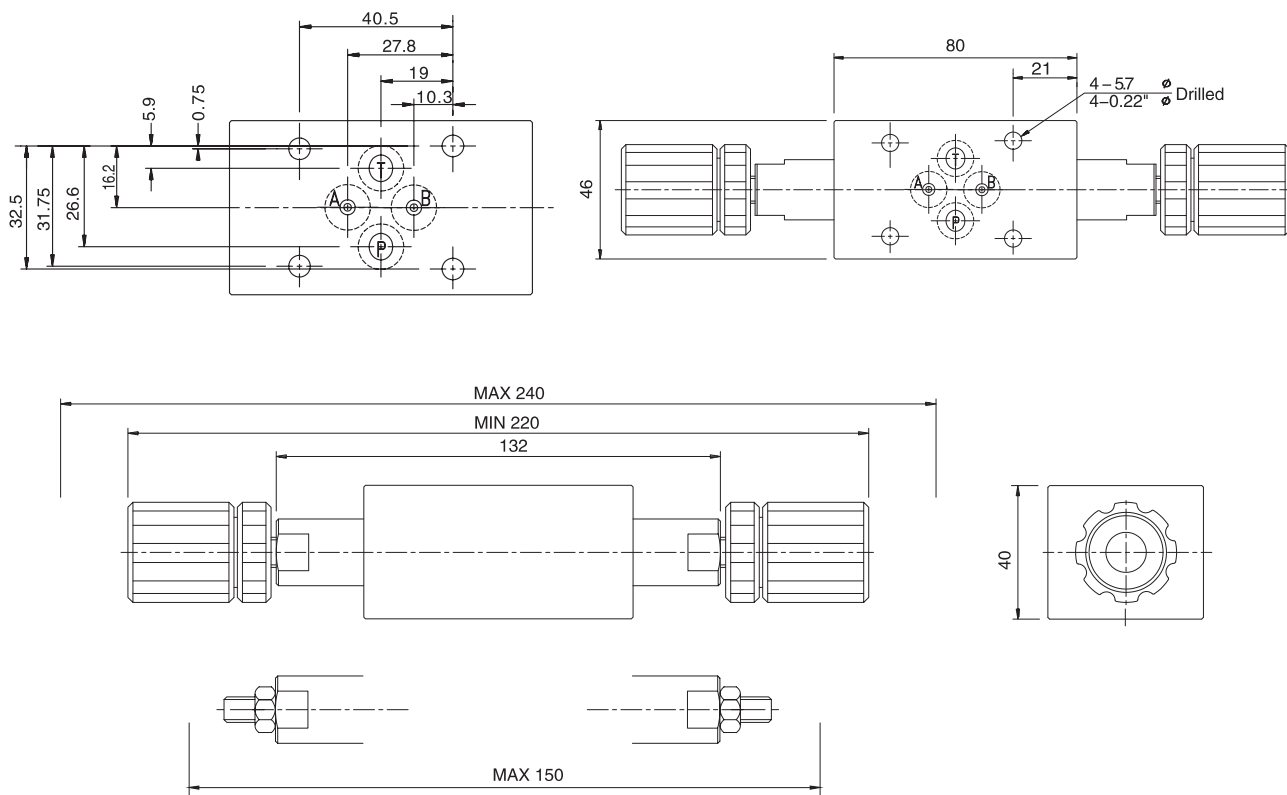


MRV-03

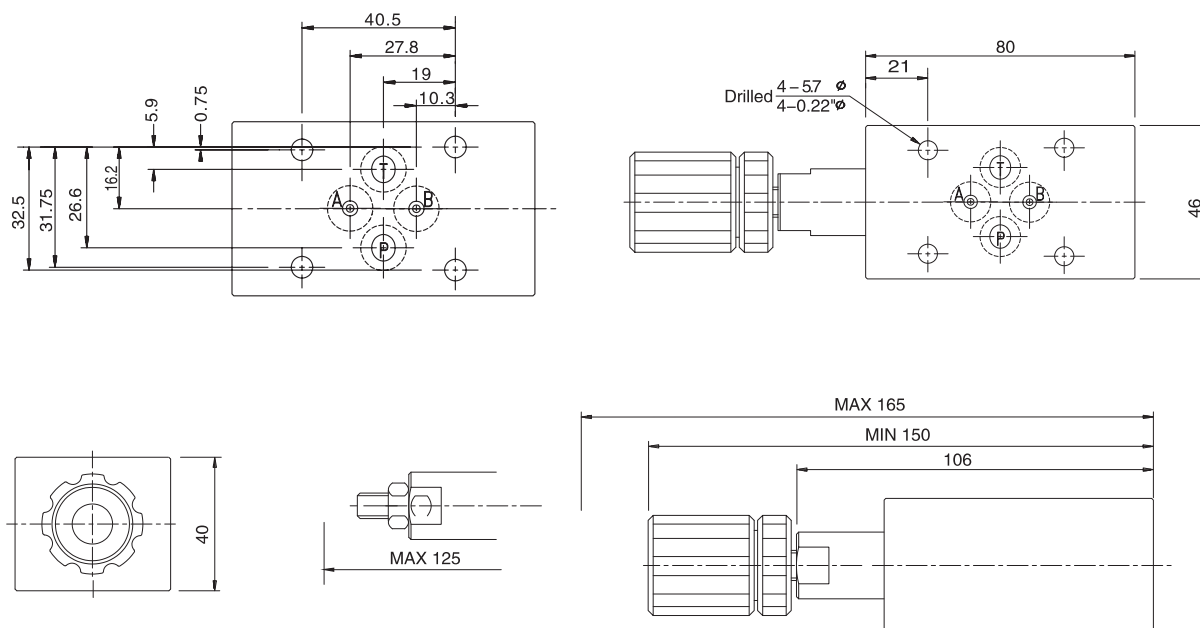


■ 尺寸圖

MRV-01-W

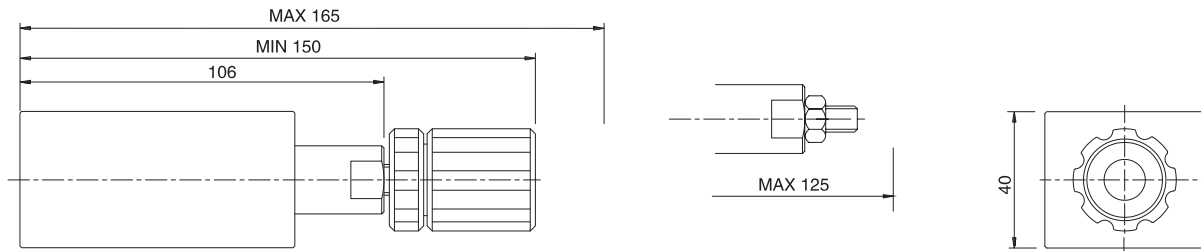
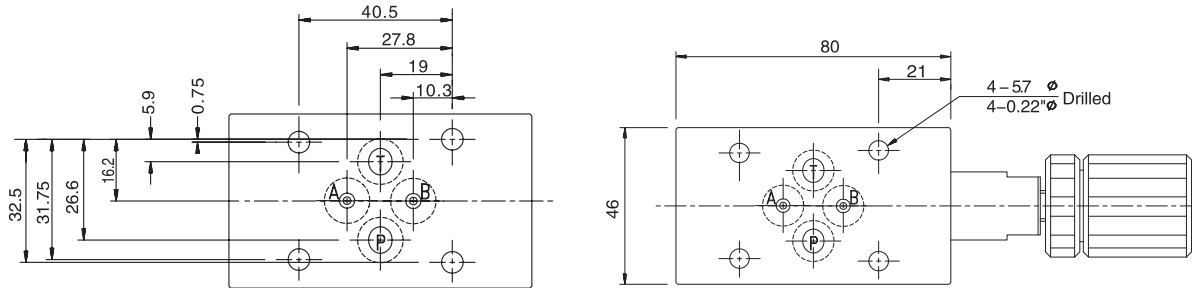


MRV-01-A

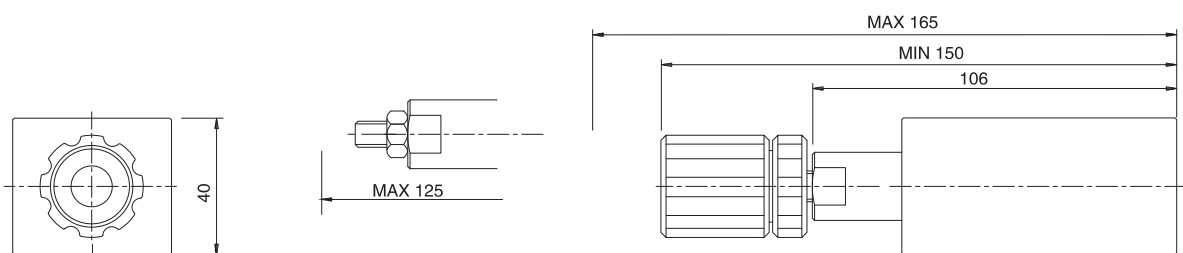
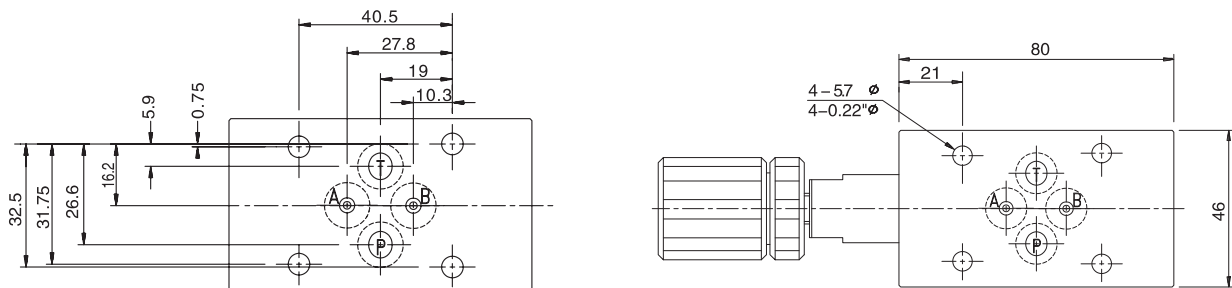


■ 尺寸圖

MRV-01-B

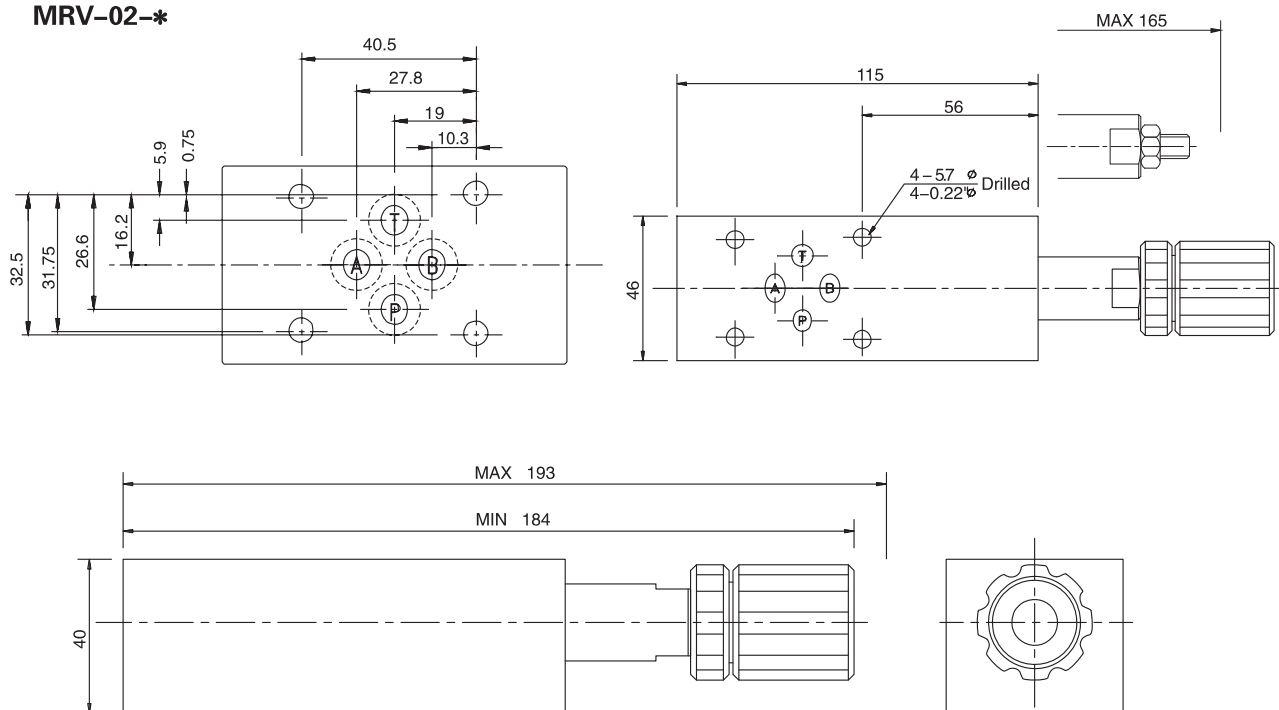


MRV-01-P

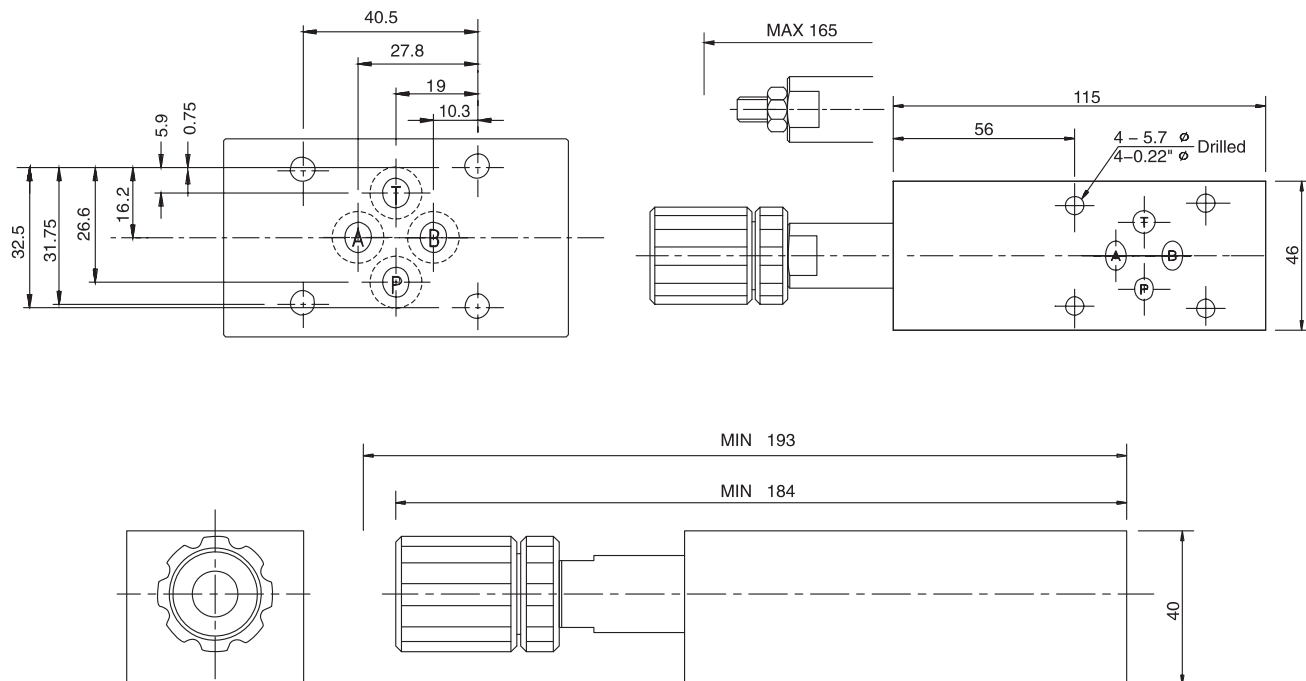


■ 尺寸圖

MRV-02-*

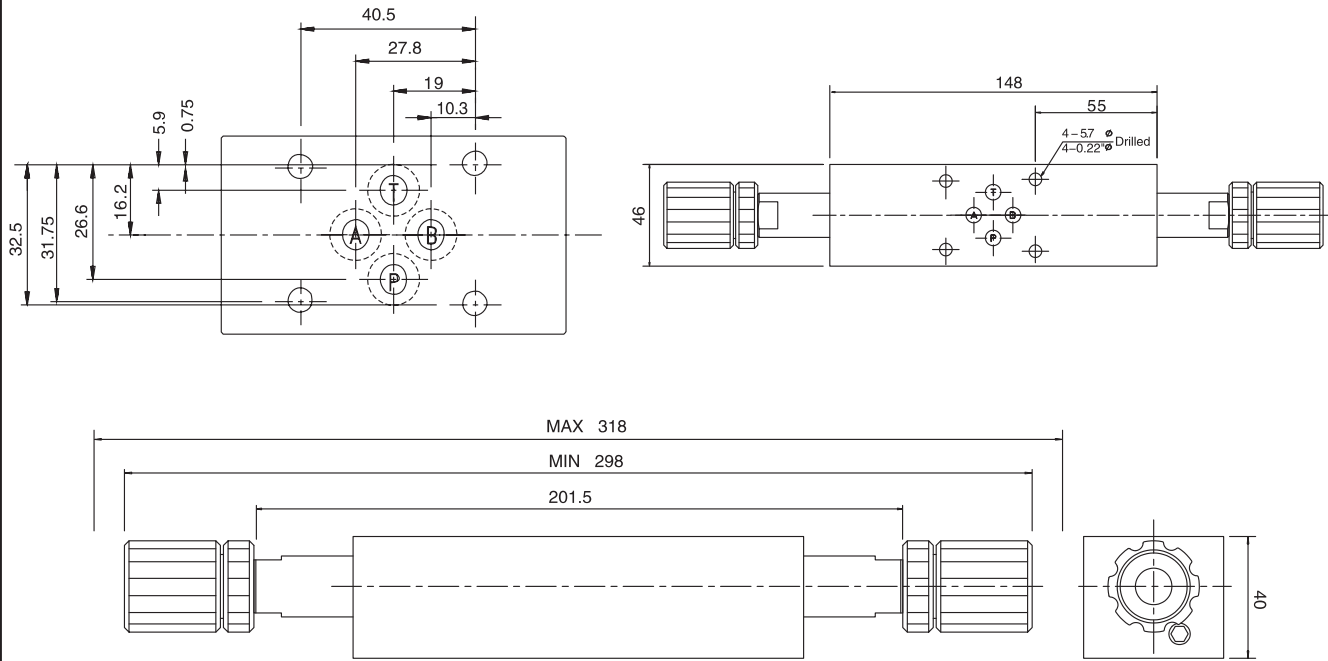


MRV-02-* -L

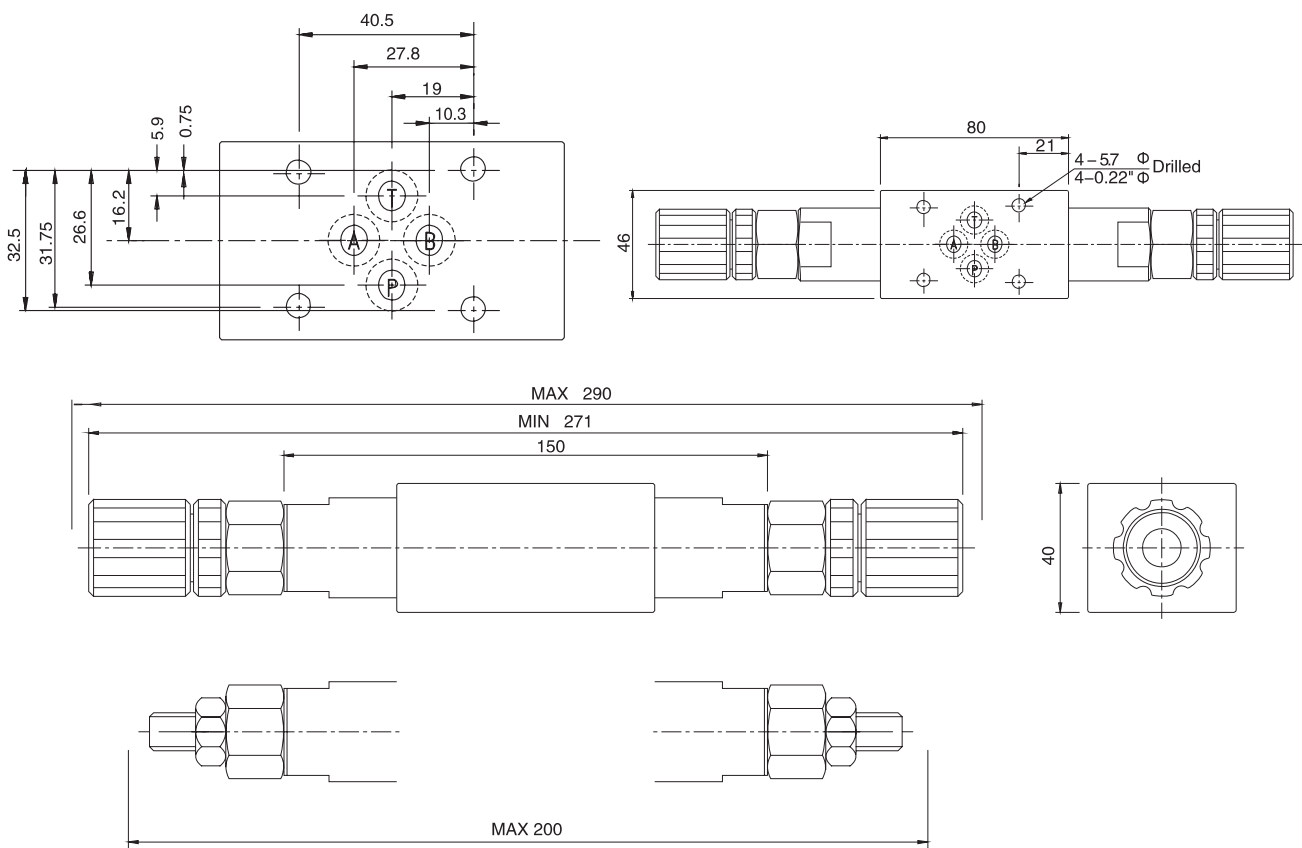


■ 尺寸圖

MRV-02-W

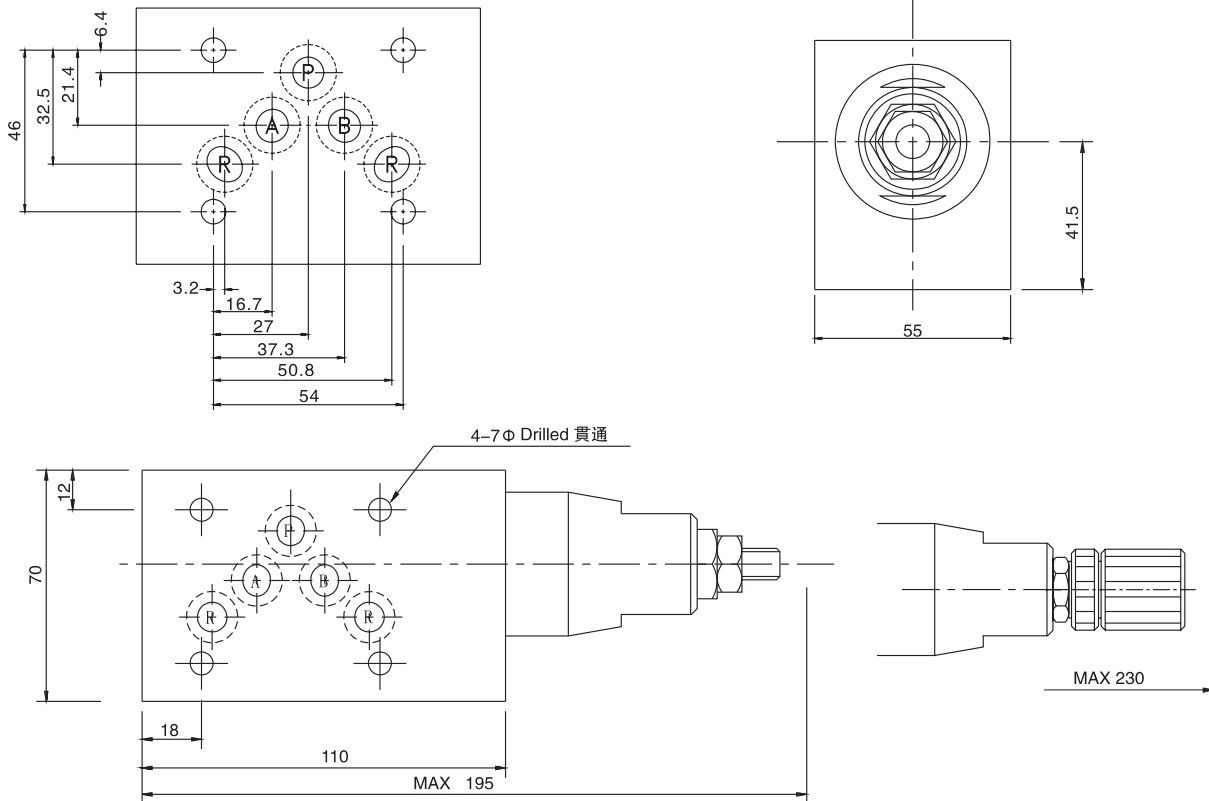


MRV-02-C, D

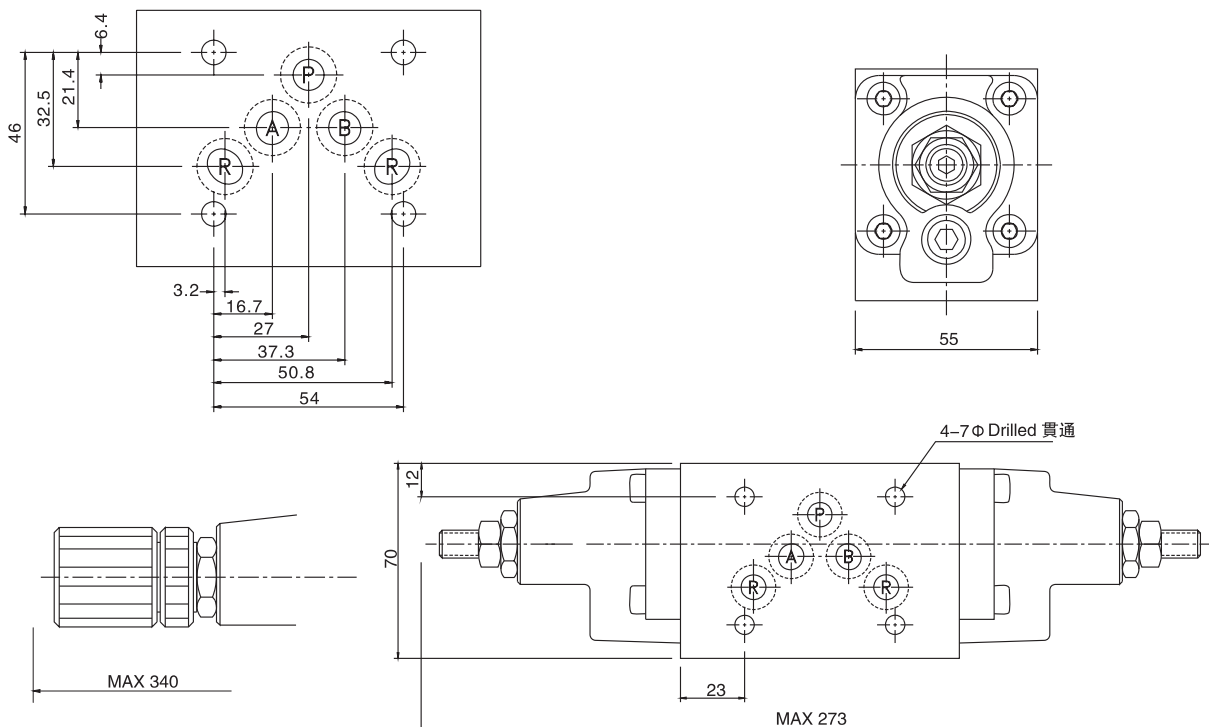


■ 尺寸圖

MRV-03-*

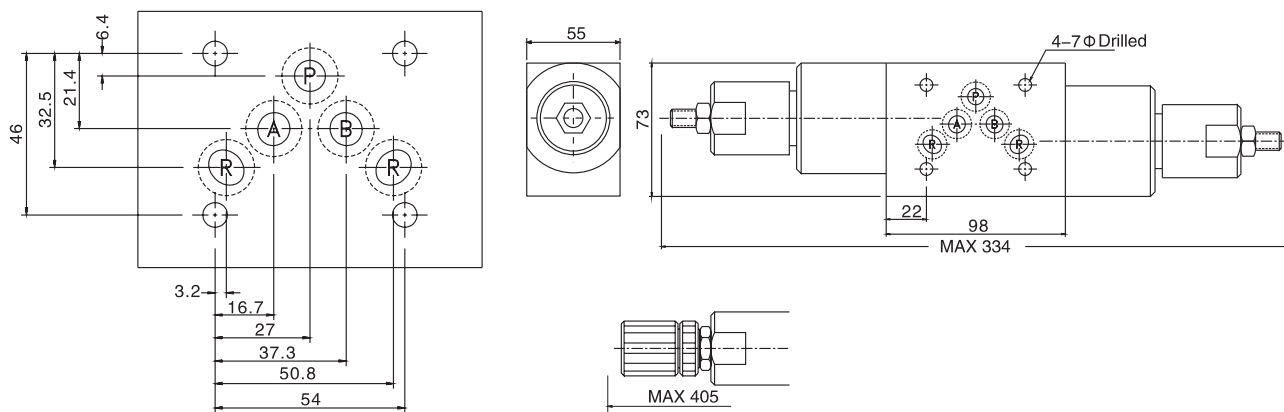


MRV-03-W

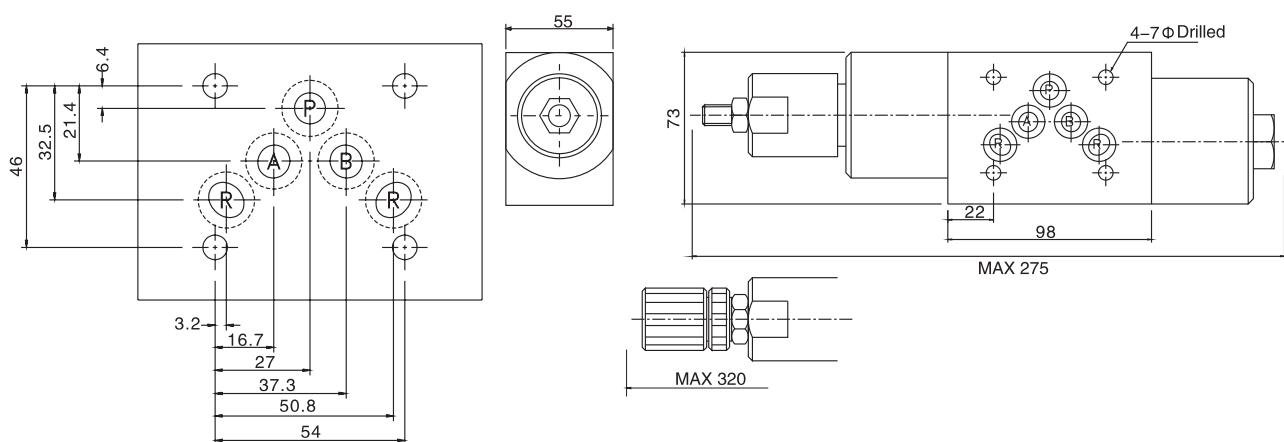


■ 尺寸圖

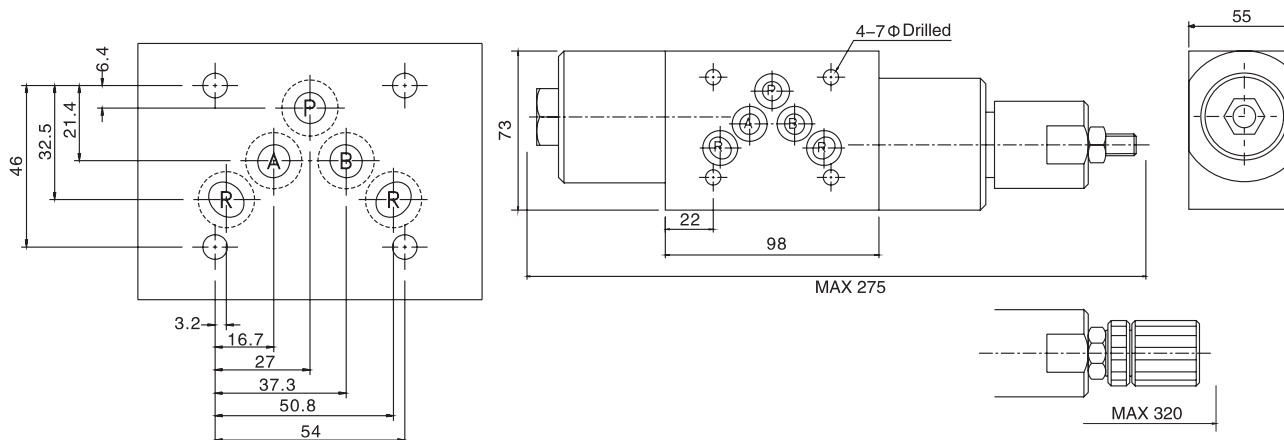
MRV-03-D



MRV-03-AD

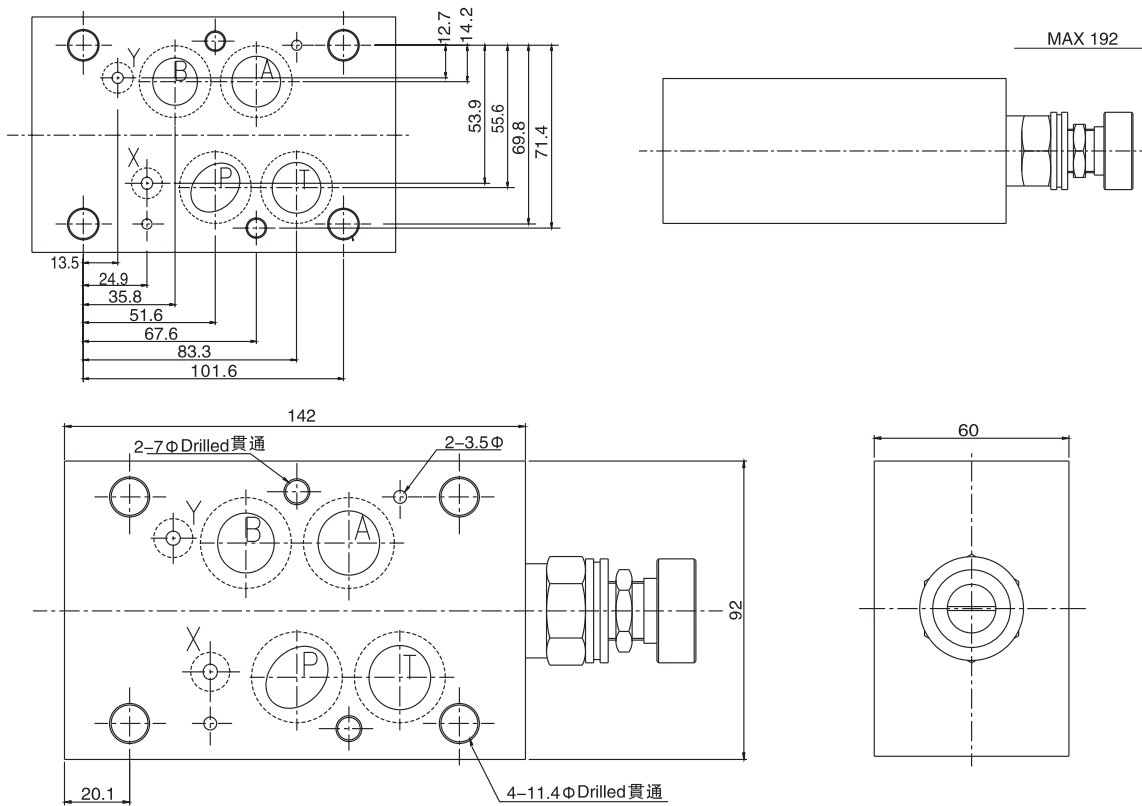


MRV-03-BD



■ 尺寸圖

MRV-04-P



MRV-06-*

