

**性能参数 Specifications**

工作温度: -30°C ~ +120°C

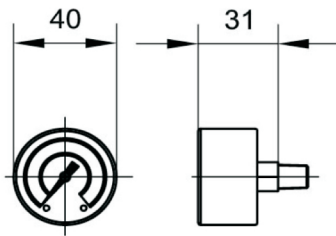
密封材料: 丁晴橡胶

Working temperature: -30°C ~ +120°C

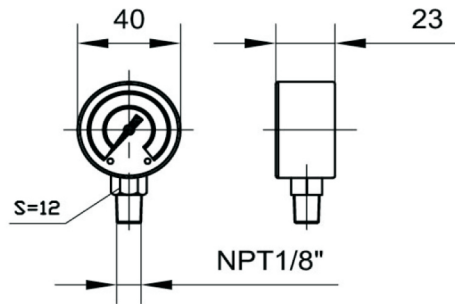
Seal: NBR



轴向压力 / 真空表  
Axial mounting pressure / Vacuum gauge

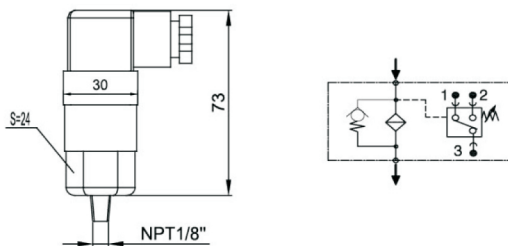


径向压力 / 真空表  
Radial mounting pressure / Vacuum gauge



型号 Type	名称 Description	发讯值 Value(bar)
CPG040R010N02	径向压力表 Radial pressure gauge	0 ~ + 10
CPG040A010N02	轴向压力表 Axial pressure gauge	
CVG040R001N02	径向真空表 Radial vacuum gauge	0 ~ - 1
CVG040A001N02	轴向真空表 Axial vacuum gauge	

压力 / 真空开关  
Pressure / Vacuum switch



型号 Type	名称 Description	发讯值 Value(bar)
CPS001N015N02	压力开关 Pressure switch	1.5
CPS001N025N02		2.5
CPS001N035N02		3.5
CVS001N025N02	真空开关 Vacuum switch	0 ~ - 0.25

### 性能参数 Specifications

工作压力: 最大 420 bar

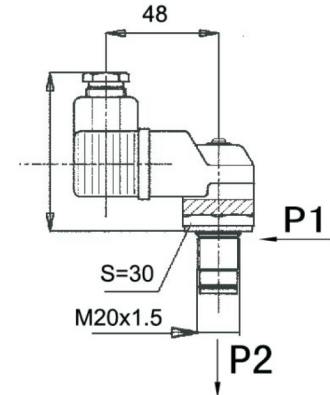
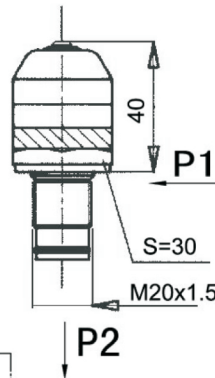
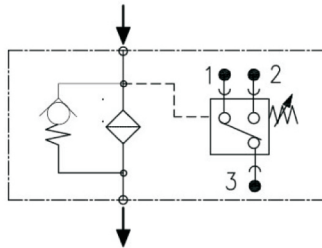
工作温度:  $-30^{\circ}\text{C} \sim +120^{\circ}\text{C}$

密封材料: 丁晴橡胶

Working pressure: Max.420bar

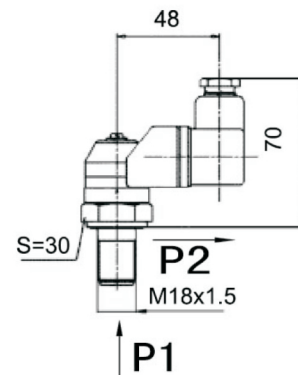
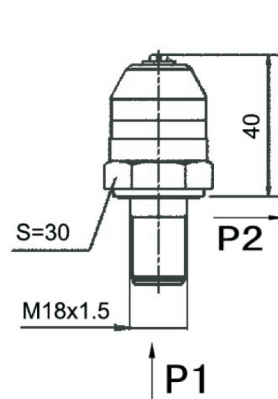
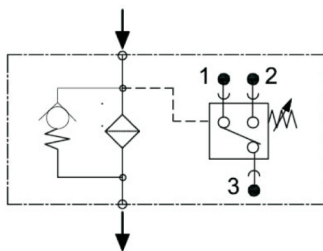
Operation temperature:  $-30^{\circ}\text{C} \sim +120^{\circ}\text{C}$

Seal: NBR



A 型压差发讯器  
Type A: Differential pressure Indicators

型号 Type	名称 Description	发讯值 Value(bar)
CPD001A035M20	目视压差发讯器	3.5
CPD001A050M20	Visual differential pressure Indicators	5.0
CPD001A080M20		8.0
CPD002A035M20	目/电压差发讯器	3.5
CPD002A050M20	Visual/Electrical differential pressure Indicators	5.0
CPD002A080M20		8.0



B 型压差发讯器  
Type B Differential pressure Indicators

型号 Type	名称 Description	发讯值 Value(bar)
CPD001B035M18	目视压差发讯器	3.5
CPD001B050M18	Visual differential pressure Indicators	5.0
CPD001B080M18		8.0
CPD002B035M18	目/电压差发讯器	3.5
CPD002B050M18	Visual/Electrical differential pressure Indicators	5.0
CPD002B080M18		8.0

**性能参数 Specifications**

保护类别: IP65/EN 60 529/iec 529

精度等级:

CPG 063: 1.6 ( +/-1.6% FS按EN837-1 )

CPG 100: 1.0 ( +/-1.0% FS按EN837-1 )

环境温度: -20°C - +60°C

测量介质温度: 最高+80°C

\* 充注甘油防震

Protect: IP65/EN 60 529/iec 529

Accuracy class:

CPG 063: 1.6 ( +/-1.6% FS as EN837-1 )

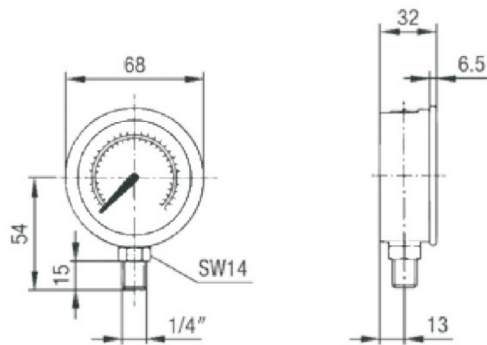
CPG 100: 1.0 ( +/-1.0% FS as EN837-1 )

Environment temperature: -20°C - +60°C

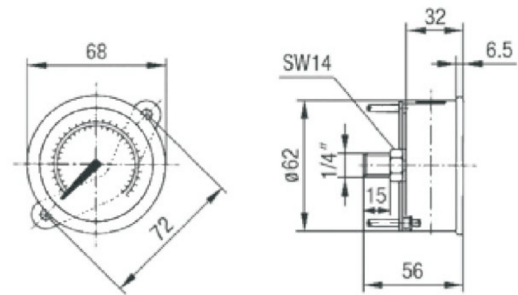
Fluid temperature: Max.+80°C

\* Filling glycerin avoid shock

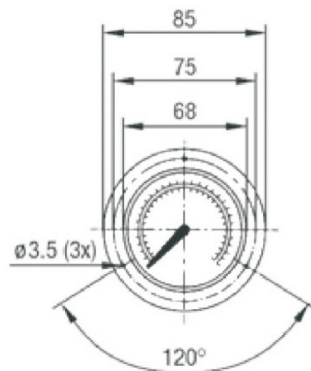
**CPG063...**



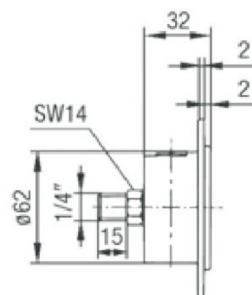
CPG 063...



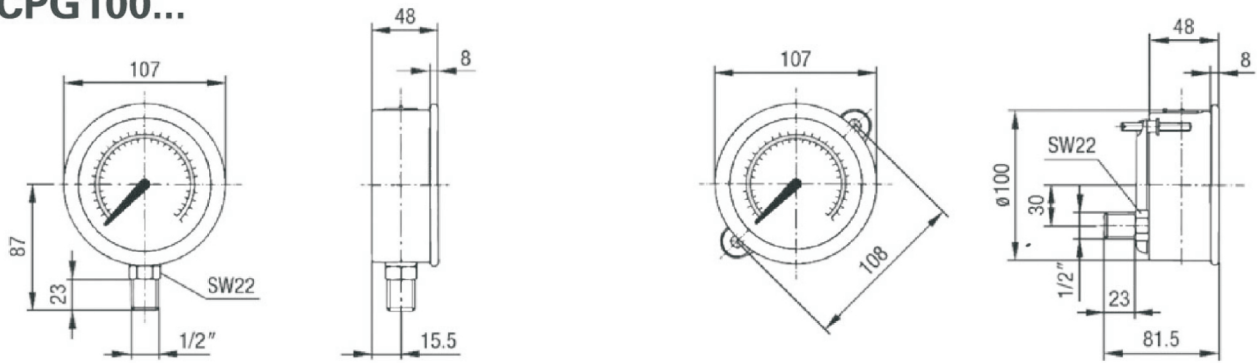
CPG 063...U



CPG 063...F

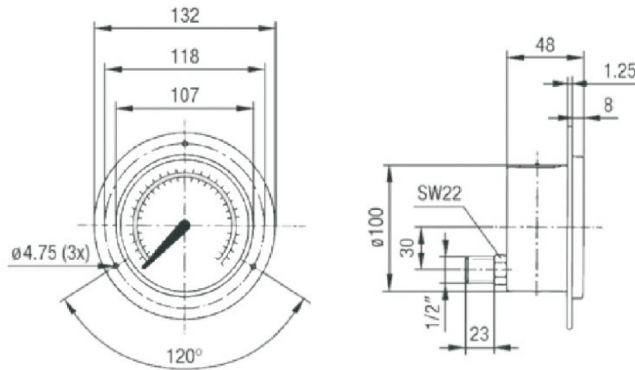


### CPG100...



CPG 063...

CPG 100...U



CPG 100...F

CPG 063 00160 01 P B04 U

型号Type	CPG 不锈钢压力表 Stainless steel pressure gauge
规格 Size	063 63 mm 接头螺纹 Thread BSPP 1/4" ,NPT1/4" ,M14X1.5
	100 100 mm 接头螺纹 Thread BSPP 1/2" ,NPT1/2" ,M20X1.5

压力指示范围 Pressure Range	
代码 Code	指示范围 Range
(-1)00001	(-1)-1,5 bar / 21 PSI
(-1)00003	(-1)-3 bar / 42 PSI
00010	0)-10 bar / 145 PSI
00016	0)-16 bar / 230 PSI
00025	0)-25 bar / 360 PSI
00040	0)-40 bar / 580 PSI
00060	0)-60 bar / 850 PSI
00100	0)-100 bar / 1450 PSI
00160	0)-160 bar / 2300 PSI
00250	0)-250 bar / 3600 PSI
00400	0)-400 bar / 5800 PSI
00600	0)-600 bar / 8500 PSI
00680	0)-680 bar / 10000 PSI
00700	0)-700 bar / 10000 PSI
01000	0)-1000 bar / 14500 PSI
其他压力范围请垂询 Other pressure range as requirement	

固定件 Fastener 仅用于轴向连接 For axial connected only	
	无固定件 No
U	固定架 fixation
F	固定法兰 fixed flange
UF	固定架及法兰 Fixation and Flange

安装螺纹 Connected Thread	
B04	1/4" BSPP(仅用于CPG 063)
B08	1/2" BSPP(仅用于CPG 100)
N04	1/4" NPT(仅用于CPG 063)
N08	1/2" NPT(仅用于CPG 100)
M14	M14X1.5(仅用于CPG 063)
M20	M20X1.5(仅用于CPG 100)

连接方式 Installation way	
S	径向连接 Radial installation
P	轴向连接 Axial installation

表盘压力单位 Pressure unite in plate	
01	BAR / PSI
07	MPa / PSI
其它表盘压力单位请垂询 Other Pressure unite as requirement	

