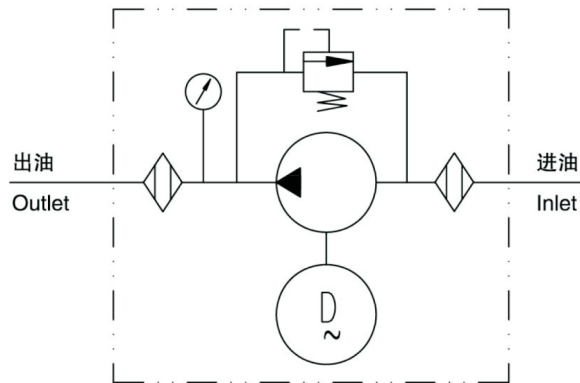


产品液压符号  
Hydraulic symbol



### 性能参数 Specifications

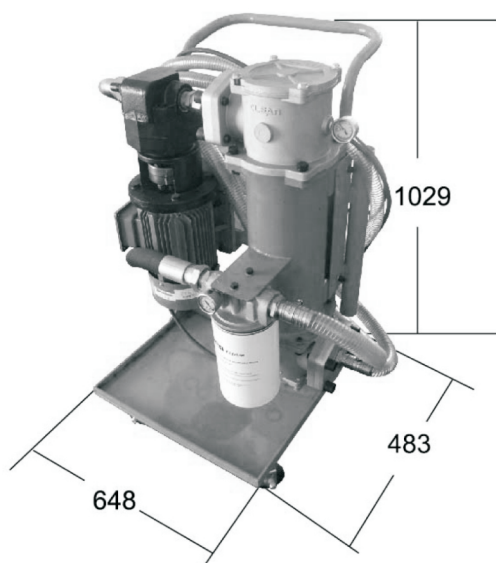
最大流体粘度: 320cSt	Maximum fluid viscosity: 320cSt
工作流量: 40L/min, 100L/min	Flow rate: 40L/min, 100L/min
目视发讯器发讯压力: 2.5bar	Indicator: 2.5bar
旁通阀开启压力: 3.5br	Bypass valve settings: 3.5bar
工作温度: -20°C ~ +90°C	Operating temperatures: -20°C to +90°C
电机:	Motor:
0.75kW/1450rpm	0.75kW/1450rpm
2.2 kW/1450rpm	2.2 KW/1450rpm
电压:	Voltage:
380 VAC	380 VAC
220 VAC	220 VAC
密封材料: 丁晴橡胶/氟橡胶	Seal: NBR,Viton, EPDM on request
工作介质相容性:	Fluid compatibility: Suitable for mineral oils,diesel
适用于各种矿物油, 人工合成油, 柴油。	fuels. synthetic oils. For use with water, please
其它各种介质请咨询公司技术部门。	contact our company.
重量: 约45Kg	Weight: 45Kg



**订货代码** Ordering Code

**滤油小车** Portable Filter Cart

	PFC	0040	F	010	N	380	V
型号 Type	_____						
流量 Flow rate	_____						
0040: 40L/min, 0100: 100L/min							
滤芯材料 Element material	_____						
P: 滤纸 Celullose ( $\beta x=2$ )							
F: 玻纤 Glass fiber ( $\beta x \geq 200$ )							
W: 金属网 Wire mesh							
过滤精度 Filtration rating ( $\mu m$ )	_____						
(F): 002, 005, 010, 020 (P): 010, 025 (W): 040							
密封材料 Seals	_____						
N: 丁晴橡胶 NBR, V: 氟橡胶 Viton							
电源 Power	_____						
380 – 380VAC							
220 – 220VAC							
发讯器 Indicators	_____						
N: 无 No, V: 目视 visual							



### 订货代码 Ordering Code

### 滤芯 The Replacement Element

PFE 0040 F 010 N

滤芯型号 Element type \_\_\_\_\_

流量 Flow rate \_\_\_\_\_

0040: 40L/min, 0100 : 100L/min

滤芯材料 Element material \_\_\_\_\_

P: 滤纸 Celullose ( $\beta x=2$ )

F: 玻纤 Glass fiber ( $\beta x \geq 200$ )

W: 金属网 Wire mesh

过滤精度 Filtration rating ( $\mu m$ ) \_\_\_\_\_

(F): 002, 005, 010, 020 (P): 010, 025 (W): 040

密封材料 Seals \_\_\_\_\_

N: 丁晴橡胶 NBR, V: 氟橡胶 Viton

★ 吸油滤芯型号 PFE W100 N

### PFC 滤油小车操作指南

- 1) 将吸油管插入需要过滤的油箱中;
- 2) 将出油管插入清洁油箱中;
- 3) 确认 ON/OFF 开关处于关闭状态, 接好地线;
- 4) 打开开关到 ON(开)位置, 待 30-60 秒等滤器壳体充满油液, 观察小车出口油液情况, 如果重复几次仍然没有油液, 请检查泵进口是否固紧, 过滤器顶盖密封圈是否在位。如果是高粘度液体, 需要先充一部分油液到过滤器壳体进口中保证泵可以启动。
- 5) 必须及时观察污染指示器, 当指示器进入红区时, 请及时更换清洁滤芯以防止再进一步过滤器旁通。

### PFC Operation Guide

- 1) Insert the inlet wand assembly into the supply fluid receptacle (drum/reservoir).
- 2) Insert the outlet wand assembly into the clean fluid receptacle (drum/reservoir).
- 3) Verify that the ON/OFF switch is OFF and plug the cord into a grounded outlet (3 wire).
- 4) Turn switch to ON position and check outlet to wand for oil flow. Allow 30 to 60 seconds for filters fill with oil. If repeated attempts to obtain oil flow fail, check pump inlet fittings for tightness, remove inlet filter access cover and verify the cover sealing "o" -ring is in place. For very viscous fluids it may be necessary to pour 1 or 2 quarts of fluid into the inlet filter housing to prime pump initially.
- 5) The condition of the filter element should be monitored by observing the cleanliness indicator on the discharge filter. When the Indicator is in the red position both inlet and outlet filter elements MUST be replaced to prevent fluid from going into bypass in the filters.

## PFC滤油小车维护说明

- 1) 关闭开关至OFF (关) 位置, 拔下电源插头;
- 2) 拆下油管, 防止发生虹吸;
- 3) 松开过滤器顶部螺钉, 取下顶盖;
- 4) 取出滤芯压盖, 滤芯随压盖取出;
  - a) 更换玻纤、滤纸材质的滤芯;
  - b) 金属网滤芯可以取下, 用超声波清洗机效果最好。
- 5) 安装滤芯到压盖上, 装入过滤器壳体中, 确认压盖密封圈位置正确;
- 6) 检查顶盖密封圈, 如果需要进行更换,
- 7) 安装顶盖, 拧紧螺钉, 不要过紧。

## PFC Maintenance Instructions

- 1) Turn switch to OFF position and unplug cord from electrical outlet.
- 2) Remove tube wands from oil top to prevent siphoning.
- 3) Loosen hex head screws on filter cover. Turn cover to clear screws, remove cover.
- 4) Pull flow diverter assembly from the filter head. Filter element will follow the diverter.
  - a) Replace the cellulose, synthetic or Microglass II elements.
  - b) Wire mesh elements can be cleaned. Ultrasonic cleaners provide best results. Verify replacement.
- 5) Install element on flow diverter and reinstall in filter housing. Make sure diverter "o"-rings seat properly into the head.
- 6) Inspect the cover "o"-ring and replace if necessary.
- 7) Replace cover and tighten hex headscrews until they are snug. Do not over-torque these screws.

故障 Problem		原因 Cause		解决方法 Solution	
不能启动	Does not start.	ON/OFF 开关未打开	ON/OFF switch.	如开关有问题请更换	Turn switch on, replace switch if defective.
		无电	No electrical power.	插上电源, 检查电路的断路器, 检查熔断保险丝。	Plug in carts, check for tripped circuit breakers, check for blown fuses.
		电机有问题	Defective motor.	更换电机。	Replace motor.
无油液流出或泵尖锐噪音	No oil flow or erratic pump noise.	过滤器壳体内未充油	Filter housing not filled with	等泵运行30-60秒	Allow pump to run 30 to 60 seconds
		吸油漏	Suction leak.	检查进口和顶盖密封圈, 充一些油液到过滤器进口	Check tightness of inlet fittings. Check "o"-ring in inlet filter cover for nicks. Add 1 or 2 quarts of oil to inlet filter.
		电机有问题	Defective motor.	更换电机。	Replace motor.
指示器变红或油液旁通	Indicator reads RED or BYPASS.	滤芯脏	Element dirty.	更换滤芯	Replace or clean elements
		油太冷或太粘	Oil extremely cold or viscous.	改用精度粗的滤芯	Change element to coarser micron rating.
发讯器好像不工作	Indicator does not seem to move.	无滤芯	No element	安装滤芯	Install element.
		安装了40微米滤芯	40 micron element installed in outlet filler.	必须使用吸口滤芯, 保护机器	Check cart model number to verify correct element