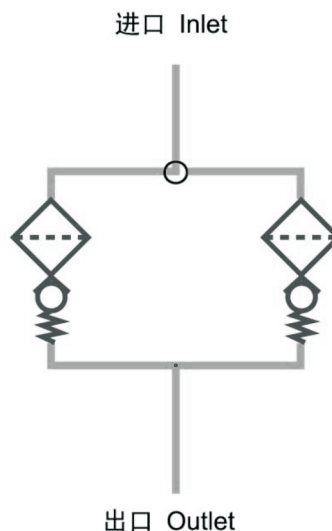




产品液压符号  
Hydraulic symbol



## 技术性能参数 Specification

结构形式：管路型，双筒切换	Type of construction: Inline duplex filter
安装方式：过滤器背面4个安装螺纹孔	Mounting method: 4 mounting holes in filter back
流动方向：顶部进口，侧面出口	Flow direction: Inlet at top and outlet at side
工作压力：最大315bar	Operating pressure: Max. 315 bar
工作温度：-30℃ ~ +120℃	Operating temperature range: -30℃ to +120℃
接口形式：BSPP/公制螺纹，SAE法兰	Ports: Threaded BSPP/Metric, Flanges SAE
密封材料：丁晴橡胶，氟橡胶	Seal material: NBR, Viton, EPDM on request
过滤材料： 玻纤，滤纸和金属网	Filtration media: glass fibre, cellulose and wire mesh.
滤芯爆破强度：20bar	Element collapse rating: 20 bar (ISO 2941)
旁通阀开启压力：6bar 其它压力设置按用户需求	Bypass setting: Opening pressure 6 bar, Other settings on request.
发讯器报警压力：5bar 目视式-目/电式	Pressure indicator options: 5 bar visual - visual /electrical
壳体材料：铸铁，钢	Filter housing: head: SG iron, bowl: steel
工作介质相容性： 适用于各种矿物油，人工合成油。 其它各种介质请咨询公司技术部门。	Fluid compatibility: Suitable for mineral oils, synthetic oils. For use with water, please contact our company.

## 订货代码 Ordering Code

## 过滤器 The Completed Filter

PDF 0110 F 010 N B12 V

过滤器型号 Filter type \_\_\_\_\_

流量 Flow rate (L/min) \_\_\_\_\_  
0030, 0060, 0110, 0160, 0240, 0330, 0500, 0660

滤芯材料 Element material \_\_\_\_\_  
P: 滤纸 Celullose ( $\beta x=2$ )  
F: 玻纤 Glass fiber ( $\beta x \geq 200$ )  
W: 金属网 Wire mesh

过滤精度 Filtration rating ( $\mu m$ ) \_\_\_\_\_  
(F): 002, 005, 010, 020 (P): 010, 025 (W): 040

密封材料 Seals \_\_\_\_\_  
N: 丁晴橡胶 NBR, V: 氟橡胶 Viton

接口形式/尺寸 Port type/Size \_\_\_\_\_

流量 Flow Rate	形式/尺寸 Type/Size						
	B(BSPP 管螺纹 thread)			M(公制螺纹 Metric thread)			F(法兰 Flange)
	08	12	24	18	27	48	50
PDF0030	●			●			
PDF0060		●			●		
PDF0110		●			●		
PDF0160			●			●	
PDF0240			●			●	
PDF0330							●
PDF0500							●
PDF0660							●
B08=G <sup>1</sup> / <sub>2</sub> , B12=G <sup>3</sup> / <sub>4</sub> , B24=G1- <sup>1</sup> / <sub>2</sub>							
M18=M18x1.5, M27=M27x2, M48=M48x2							
F50=SAE 62-2"							

压差发讯器 Indicators \_\_\_\_\_  
N: 无 No, V: 目视 visual 5bar, E: 目/电式 visual/electrical 5bar



## 滤芯 The Replacement Element

	PDE 0110 F 010 N
滤芯 Element type _____	
流量 low rate (L/min) _____ 0030, 0060, 0110, 0160, 0240, 0330, 0500, 0660	
滤芯材料 Element material _____ P: 滤纸Cellulose ( $\beta \times = 2$ ), F: 玻纤Glass fiber ( $\beta \times \geq 200$ ), W: 金属网Wire mesh	
过滤精度 Filtration rating ( $\mu m$ ) _____ (F): 002, 005, 010, 020 (P): 010, 025 (W): 040	
密封材料 Seals _____ N: 丁晴橡胶NBR, V: 氟橡胶Viton	

## 过滤器主要性能参数 Filter Specification

过滤器 Filter	接口 Ports	滤芯 Element	流量 Flow(L/min)	重量 Weight(Kg)
PDF0030	G <sup>1</sup> / <sub>2</sub> , M18x1.5 螺纹	PDE0030...	30	7.4
PDF0060	G <sup>3</sup> / <sub>4</sub> , M27x2 螺纹	PDE0060...	60	15.0
PDF0110		PDE0110...	110	17.0
PDF0160	G1-1/2, M48x2 螺纹	PDE0160...	160	33.0
PDF0240		PDE0240...	240	36.0
PDF0330	SAE62-2 "	PDE0330...	330	154.0
PDF0500		PDE0500...	500	163.0
PDF0660		PDE0660...	660	170.0

## 压降曲线 Pressure Drop Curves

过滤器的压降是壳体的压降加上清洁滤芯的压降。推荐高压过滤器初始压降不大于1.2bar。

如果所使用的工作介质粘度不是32cSt, 实际压降计算如下:

$$\Delta p = (\Delta p_{32} \times \text{工作介质粘度}) / 32\text{cSt.}$$

过滤器压降数据是基于工作介质的动力粘度32cSt、密度0.87得到。

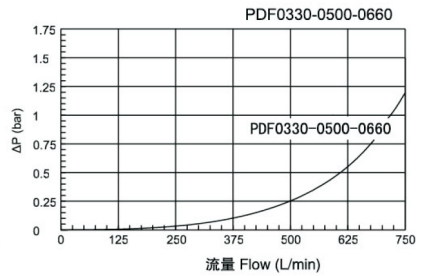
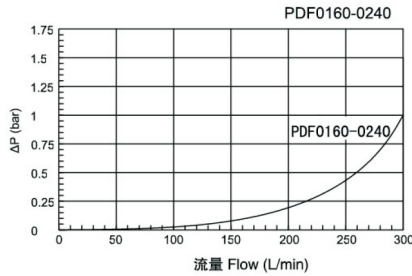
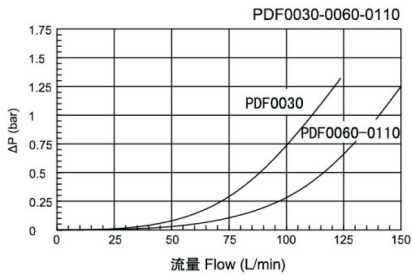
The "Assembly Pressure Drop( $\Delta P$ ) is obtained by adding the pressure drop values of the filter housing and of the clean filter element and the recommended level of the initial pressure drop for high pressure filters is Max. 1.2 bar.

If the medium used has a viscosity different from 32cSt, pressure drop over the filter can be estimated as follows:

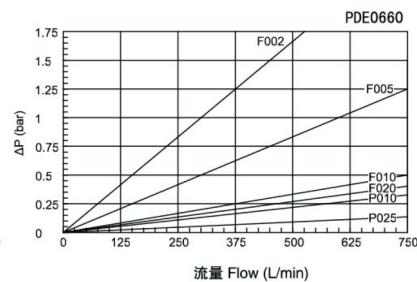
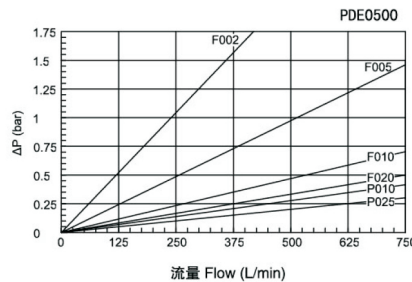
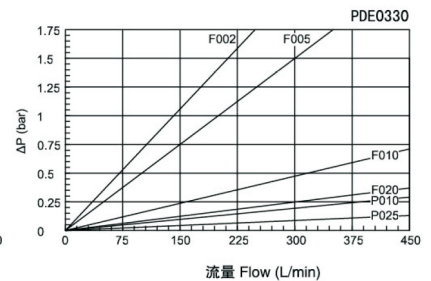
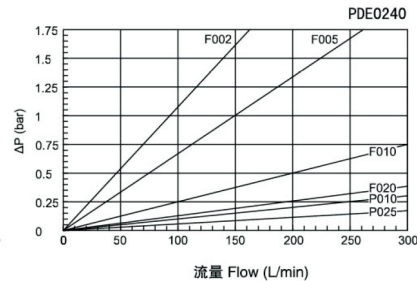
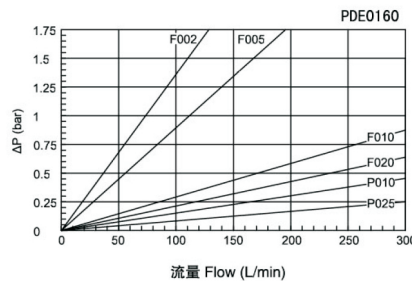
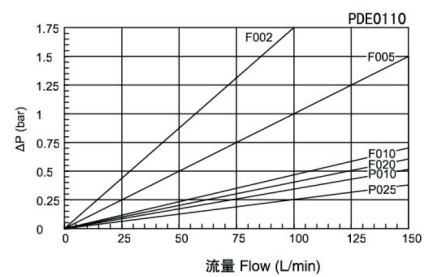
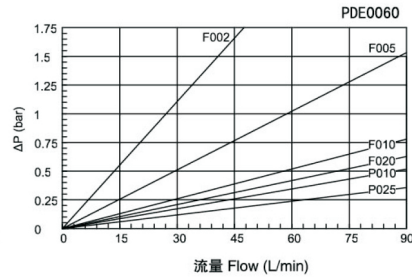
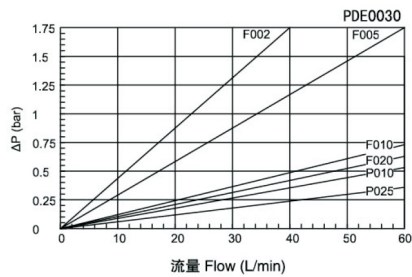
$$\Delta p = (\Delta p_{32} \times \text{viscosity of medium used}) / 32\text{cSt.}$$

Filter pressure drop based on 32cSt fluid viscosity and 0.87 density.

## 壳体压降 Filter Housing Pressure Drop

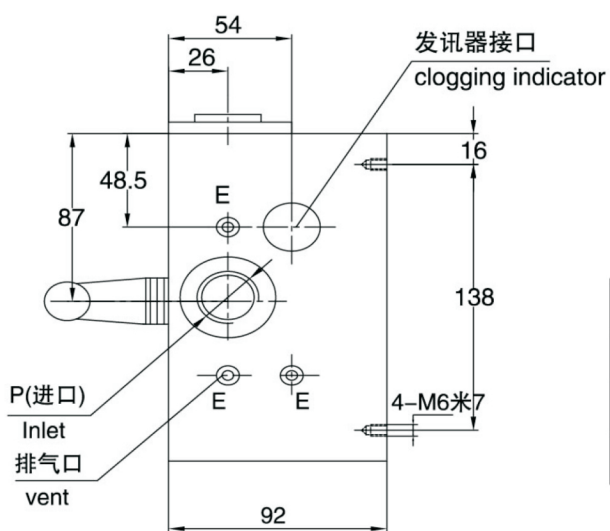
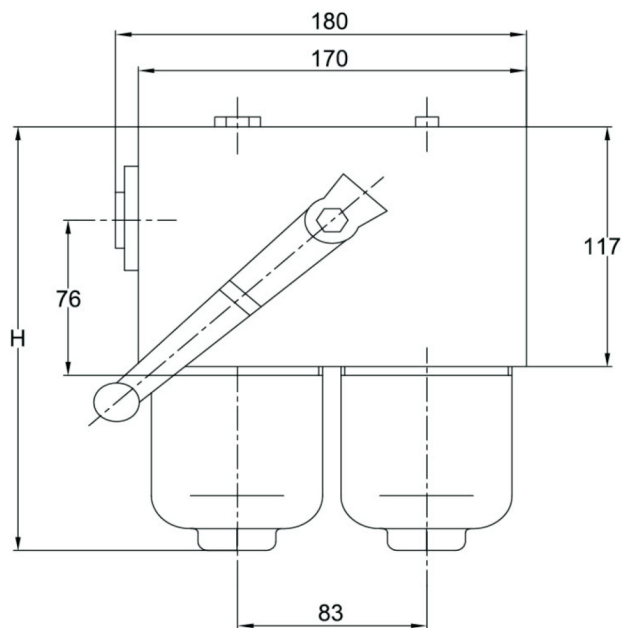
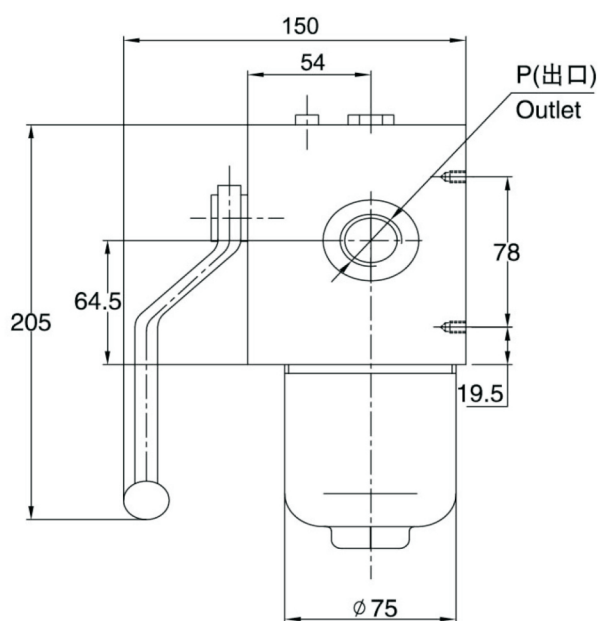


## 玻纤和滤纸滤芯初始压降 Clean Element Pressure Drop With Media F & P



外形安装尺寸 Dimensions

PDF0030-0110

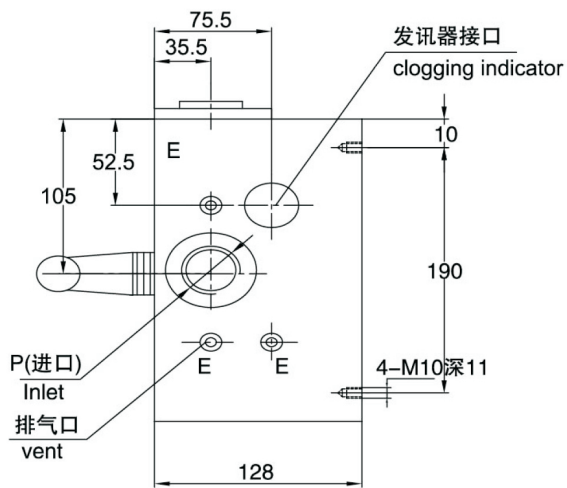
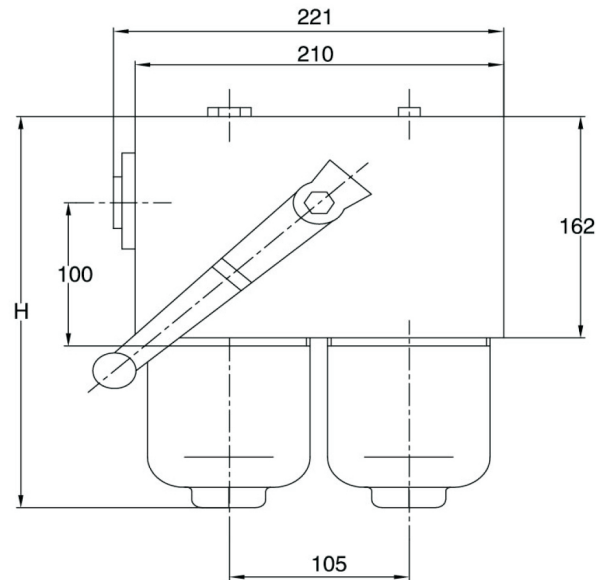
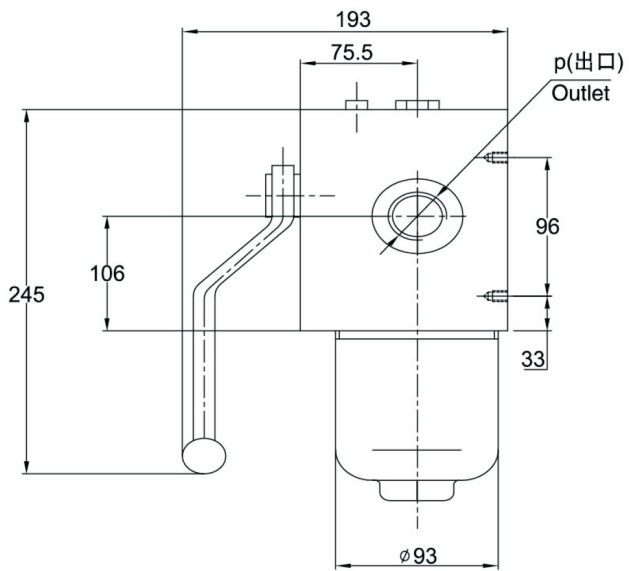


型号 Type	P	H
PDF0030	G <sup>1</sup> / <sub>2</sub> , M18x1.5	187
PDF0060	G <sup>3</sup> / <sub>4</sub> , M27x2	220
PDF0110		315



### 外形安装尺寸 Dimensions

PDF0160-0240

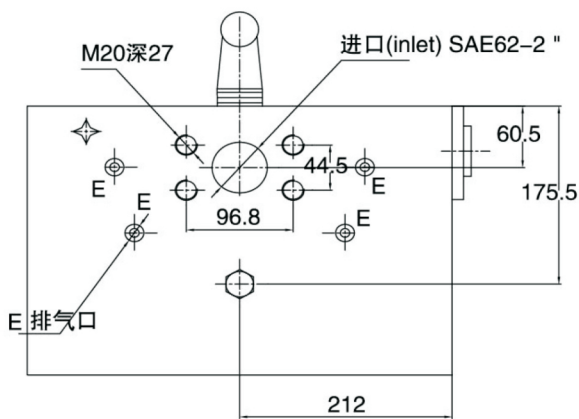
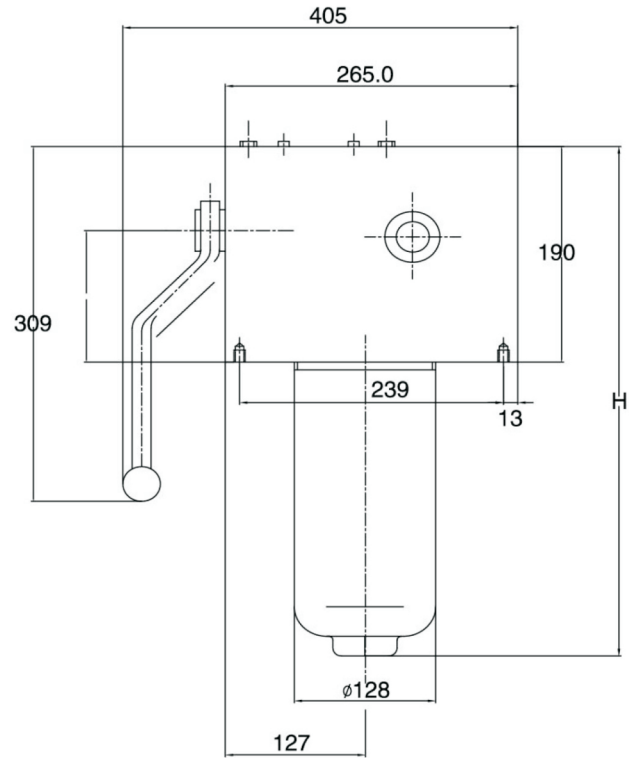
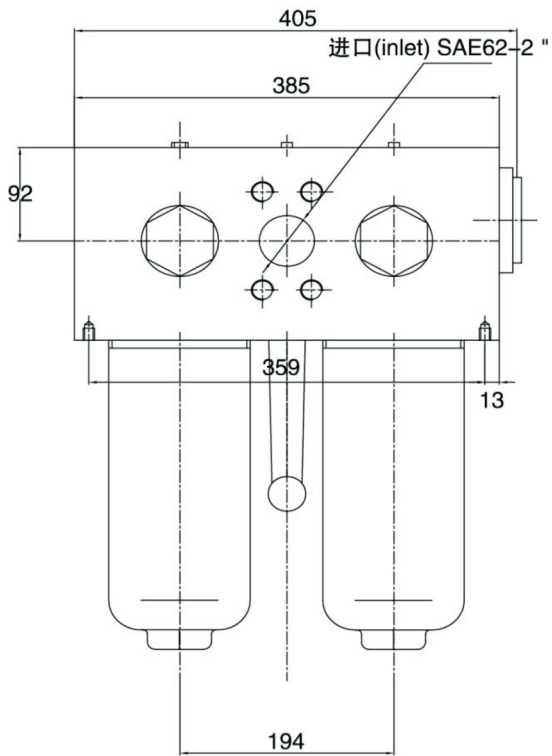


型号 Type	P	H
PDF0160	G1-1/2, M48x2	279
PDF0240		388



外形安装尺寸 Dimensions

PDF0330-0660



型号Type	P	H
PDF0330	SAE62-2 "	376
PDF0500		495
PDF0660		609