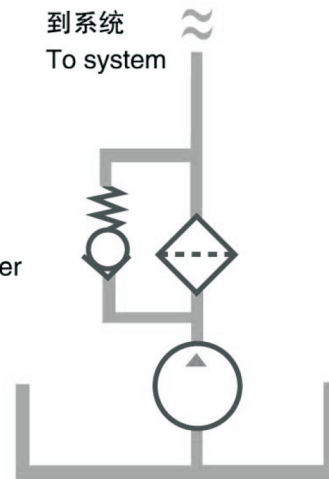




产品液压符号
Hydraulic symbol

压力过滤器
Pressure filter



性能参数 Specifications

| | |
|-------------------------|--|
| 产品结构形式：管路型 | Type of construction : Inline filter |
| 安装方式：T型,顶部4个螺纹孔吊装 | Mounting method : Vertical |
| 流动方向：在同一水平线，一边进口到另一边出口。 | Flow direction: Inlet to outlet: side connection, at the same level, on opposite sides |
| 工作压力：最大420bar | Operating pressure: Max. 420 bar |
| 工作温度：-40℃ ~ +120℃ | Operating temperature : -40℃ to +120℃ |
| 接口形式：BSPP/M 螺纹，SAE62法兰 | Connection ports: BSPP/Metric, Flanges SAE62 |
| 密封材料：丁晴橡胶/氟橡胶。 | Seal material: NBR,Viton, EPDM on request |
| 滤材： | Filtration media: |
| 玻纤：2、5、10、20 μm | glass fibre: 2、5、10、20 μm |
| 滤纸：10、25 μm | cellulose: 10 μm,25 μm |
| 金属网：40 μm | mesh:40 μm. |
| 滤芯爆破压差：20 bar | Element collapse rating: 20 bar |
| 旁通阀开启压差：6 bar | Bypass setting:Opening pressure 6 bar |
| 其它压差可按要求定制 | other settings on request. |
| 发讯装置发讯压差：5bar，目视-目/电式 | Pressure indicator options: 5 bar |
| 其它压差可按要求定制 | - visual - visual /electrical, other settings on request. |
| 工作介质相容性 | Fluid compatibility: |
| 适用于矿物油、人工合成油 | Suitable for mineral oils, synthetic |
| 其它介质请咨询公司技术部门 | For use with water, please contact our company. |

订货代码 Ordering Code

过滤器 The Completed Filter

PAF 0500 F 010 N F40 V

过滤器型号 Filter type _____

流量 Flow rate (L/min) _____
0030, 0060, 0110, 0160, 0240, 0330, 0500, 0660

滤芯材料 Element material _____
P: 滤纸 Celullose ($\beta x=2$)
F: 玻纤 Glass fiber ($\beta x \geq 200$)
W: 金属网 Wire mesh

过滤精度 Filtration rating (μm) _____
(F): 002, 005, 010, 020 (P): 010, 025 (W): 040

密封材料 Seals _____
N: 丁晴橡胶 NBR, V: 氟橡胶 Viton

接口形式/尺寸 Port type/Size _____

| 流量 Flow Rate | 形式/尺寸 Type/Size | | | | | | | | |
|--|--------------------|-----|-----|-----------------------|-----|-----|--------------|-----|-----|
| | B(BSPP 管螺纹 thread) | | | M(公制螺纹 Metric thread) | | | F(法兰 Flange) | | |
| | B08 | B12 | B16 | M18 | M27 | M33 | F25 | F32 | F40 |
| 0030 | ● | | | ● | | | | | |
| 0060 | | ● | | | ● | | | | |
| 0110 | | ● | | | ● | | | | |
| 0160 | | | ● | | | ● | ● | | |
| 0240 | | | ● | | | ● | ● | | |
| 0330 | | | | | | | | ● | ● |
| 0500 | | | | | | | | ● | ● |
| 0660 | | | | | | | | ● | ● |
| B08=G ¹ / ₂ , B12=G ³ / ₄ , B16=G1 | | | | | | | | | |
| M18=M18x1.5, M27=M27x2, M33=M33x2 | | | | | | | | | |
| F25=SAE62-1", F32=SAE62-1 1/4", F40=SAE61-1 1/2" | | | | | | | | | |

压差发讯器 Indicators _____

N: 无 No, V: 目视 visual 5bar, E: 目/电式 visual / electrical 5bar



滤芯代码 The Replacement Element

| | | | | | |
|---|-----|------|---|-----|---|
| | PAE | 0500 | F | 010 | N |
| 滤芯型号 Element type _____ | | | | | |
| 流量 Flow rate (L/min) _____ | | | | | |
| 0030, 060,0110, 0160, 0240, 0330,0500,0660 | | | | | |
| 滤芯材料 Element material _____ | | | | | |
| P: 滤纸 Celullose ($\beta x=2$), | | | | | |
| F: 玻纤 Glass fiber($\beta x \geq 200$), | | | | | |
| W: 金属网 Wire mesh | | | | | |
| 过滤精度 Filtration rating(μm) _____ | | | | | |
| (F): 002, 005, 010, 020 (P): 010, 025 (W):040 | | | | | |
| 密封材料 Seals _____ | | | | | |
| N: 丁晴橡胶 NBR, V: 氟橡胶 Viton | | | | | |

过滤器主要性能参数 Filter Specification

| 过滤器 Filter | 接口 Ports | 滤芯 Element | 流量 Flow(L/min) | 重量 Weight(Kg) |
|---------------|--|---------------|-------------------|------------------|
| PAF0030 | 螺纹 Thread G ¹ / ₂ , M18x1.5 | PAE0030 | 30 | 3.2 |
| PAF0060 | 螺纹 Thread G ³ / ₄ , M27x2 | PAE0060 | 60 | 4.2 |
| PAF0110 | | PAE0110 | 110 | 5.7 |
| PAF0160 | 螺纹 Thread G1, M33x2, 法兰 Flange SAE62 - 1 " | PAE0160 | 160 | 6.7 |
| PAF0240 | | PAE0240 | 240 | 9.2 |
| PAF0330 | 法兰 Flange SAE61 - 1 ¹ / ₂ " SAE62 - 1 ¹ / ₄ " | PAE0330 | 330 | 15.8 |
| PAF0500 | | PAE0500 | 500 | 20.3 |
| PAF0660 | | PAE0660 | 660 | 24.8 |

压降曲线 Pressure Drop Curves

过滤器的压降是壳体的压降加上清洁滤芯的压降。推荐高压过滤器初始压降不大于1.2bar。

如果所使用的工作介质粘度不是32cSt, 实际压降计算如下:

$$\Delta p = (\Delta p_{32} \times \text{工作介质粘度}) / 32\text{cSt.}$$

过滤器压降数据是基于工作介质的动力粘度32cSt、密度0.87得到。

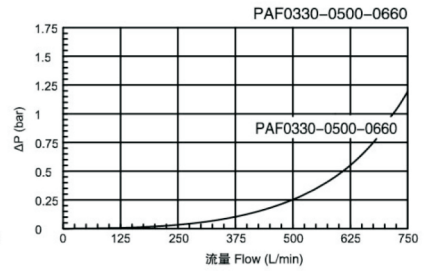
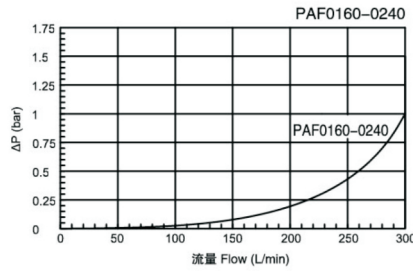
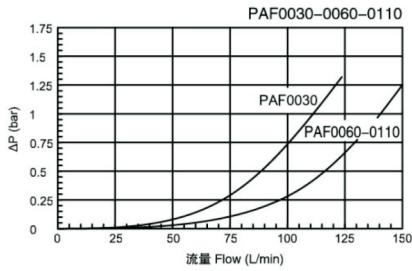
The "Assembly Pressure Drop(ΔP) is obtained by adding the pressure drop values of the filter housing and of the clean filter element and the recommended level of the initial pressure drop for high pressure filters is Max. 1.2 bar.

If the medium used has a viscosity different from 32cSt, pressure drop over the filter can be estimated as follows:

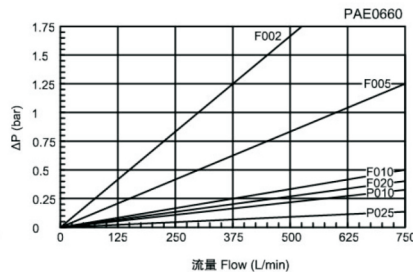
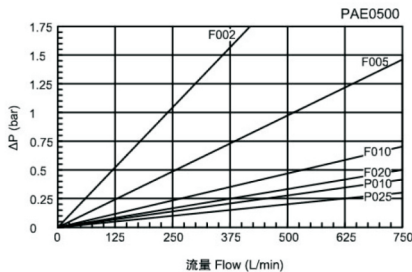
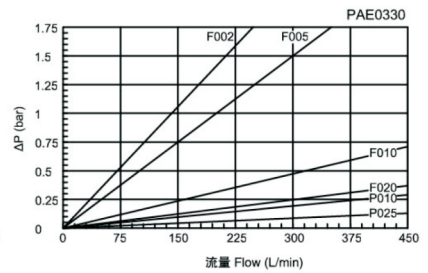
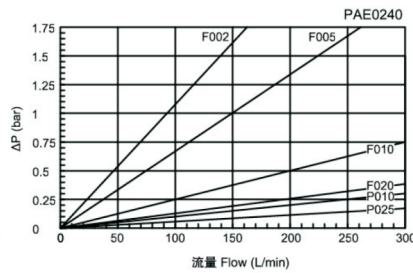
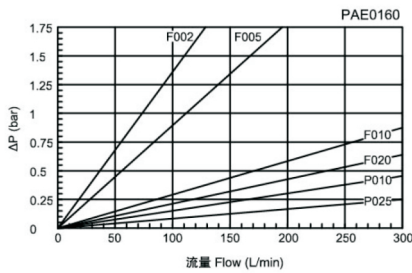
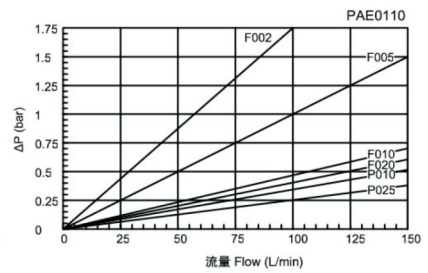
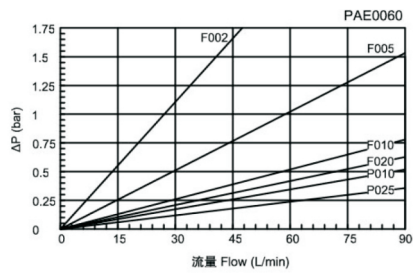
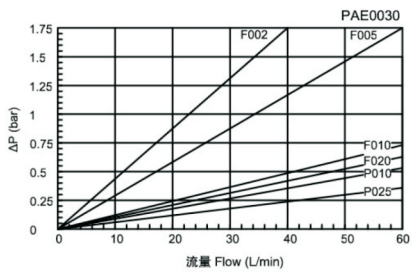
$$\Delta p = (\Delta p_{32} \times \text{viscosity of medium used}) / 32\text{cSt.}$$

Filter pressure drop based on 32cSt fluid viscosity and 0.87 density.

壳体压降 Filter Housing Pressure Drop

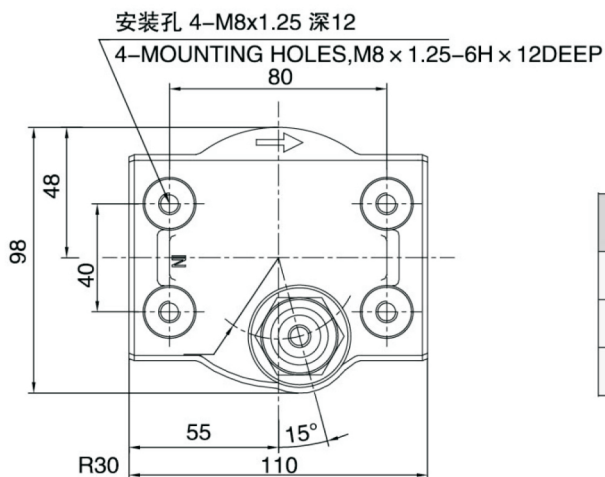
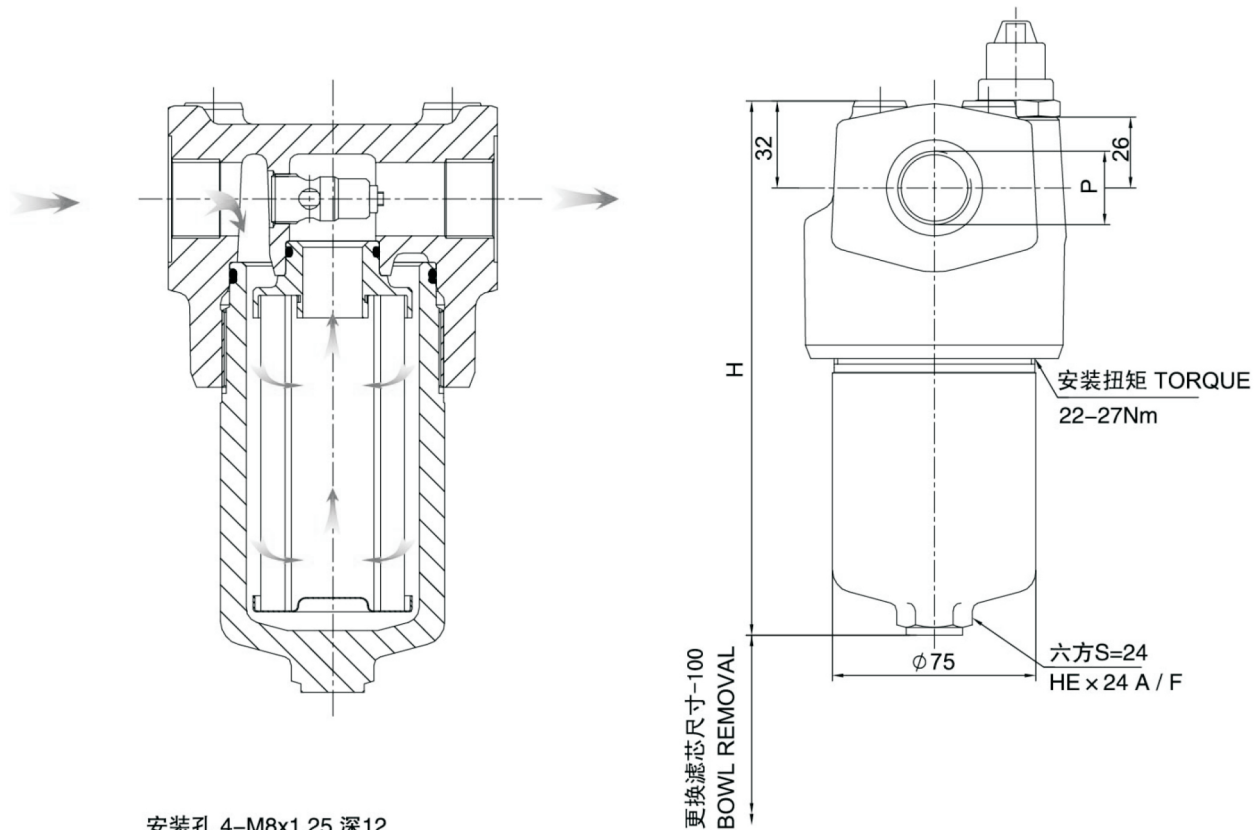


玻纤和滤纸滤芯初始压降 Clean Element Pressure Drop With Media F&P



外形安裝尺寸 Dimensions

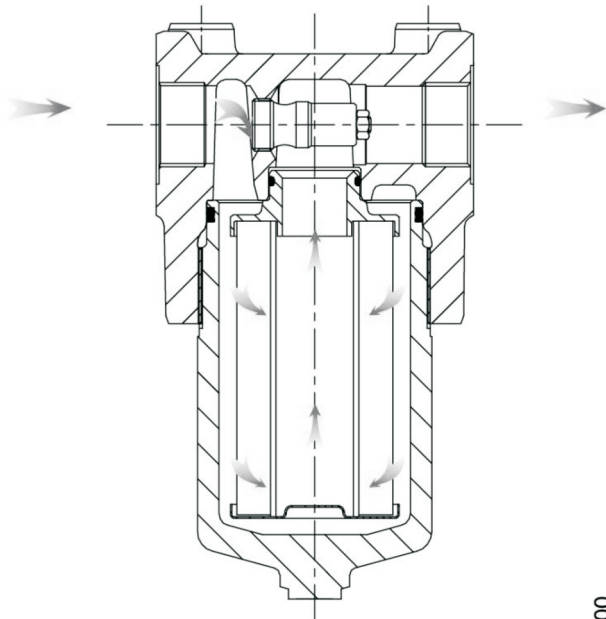
PAF0030-0110



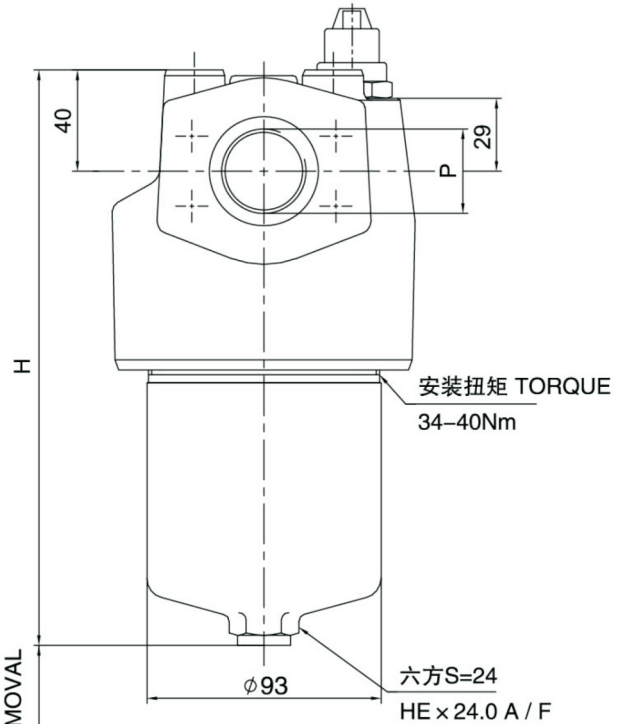
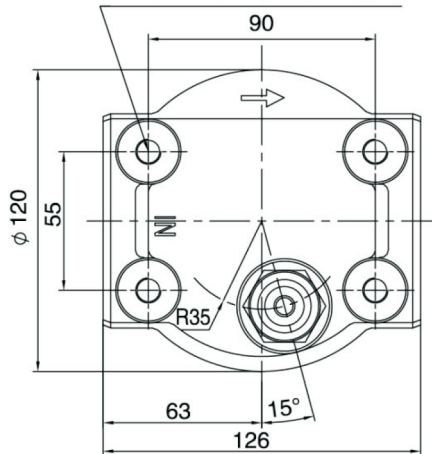
| 型号 Type | P | H |
|---------|---|-----|
| PAF0030 | G ¹ / ₂ , M18x1.5 | 165 |
| PAF0060 | G ³ / ₄ , M27x2 | 198 |
| PAF0110 | | 293 |

外形安装尺寸 Dimensions

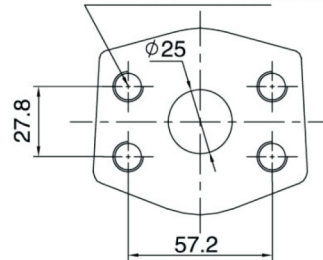
PAF0160-0240



安装孔 4-M10x1.5深11
4-MOUNTING HOLES, M10x1.5-6HX11DEEP



SAE 62-1" -6000psi(420bar)
4-M12 x 1.75-6H x 19深DEEP



| 型号Type | P | H |
|---------|------------|-----|
| PAF0160 | G1, M33x2 | 236 |
| PAF0240 | SAE62 - 1" | 345 |



外形安裝尺寸 Dimensions

PAF0330-0660

